



TOWNS TO TRAILS PLAN

Alpine County, Mono County, Inyo County

Mono CPT | April 25th 2024

Project Team



Project Overview + Goals



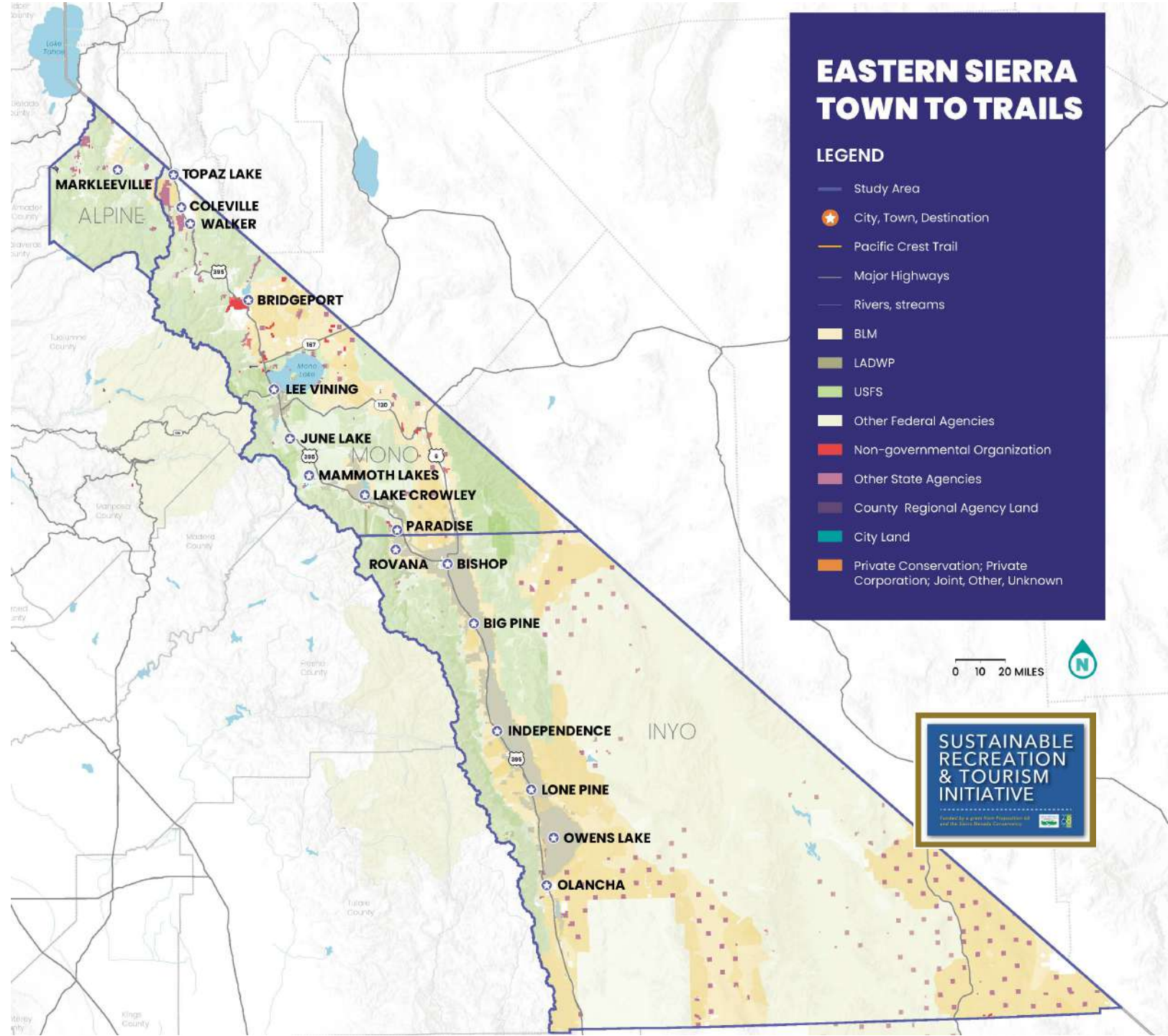
Study Area

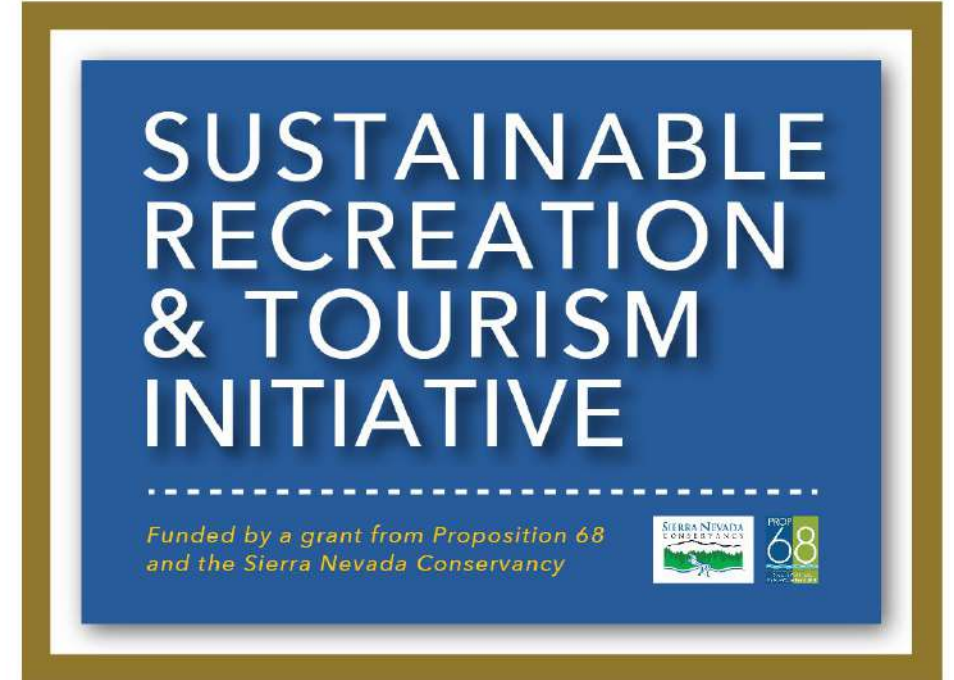
- **Counties**

- Inyo
- Mono
- Alpine

- **Primary Land Managers**

- BLM
- LADWP
- USFS





TOWNS TO TRAILS PLAN

SRTI PROJECT

Lead Agency:
Eastern Sierra
Council of Governments



SUSTAINABLE RECREATION & TOURISM INITIATIVE

PORTFOLIO OF PROJECTS

WITH ESERP PROSPECTUS FOR FUTURE INVESTMENTS

EASTERN SIERRA REGION

Sustainable Recreation Projects on Behalf of the Eastern Sierra Sustainable Recreation Partnership

20/21

EASTERN SIERRA CAMPGROUND IMPROVEMENTS

SRTI PROJECT

Lead Agency: Eastern Sierra Council of Governments

20/21

DISPERSED CAMPING MITIGATION: CAMP LIKE A PRO

SRTI PROJECT

Lead Agency: Mono County

20/21

REGIONAL RECREATION CAPACITY

SRTI PROJECT

Lead Agency: Eastern Sierra Council of Governments

20/21

VULNERABILITY IN CALIFORNIA'S EASTERN SIERRA: ASSET INVENTORY & GAP ANALYSIS

SRTI PROJECT

Lead Agency: Eastern Sierra Council of Governments

20/21

EASTERN SIERRA VISITOR CONNECTION PROGRAM

SRTI PROJECT

Lead Agency: Eastern Sierra Council of Governments

20/21

BUTTERMILK INFRASTRUCTURE & RECREATION PLANNING INITIATIVE (BIRPI)

SRTI PROJECT

Lead Agency: Eastern Sierra Council of Governments

20/21

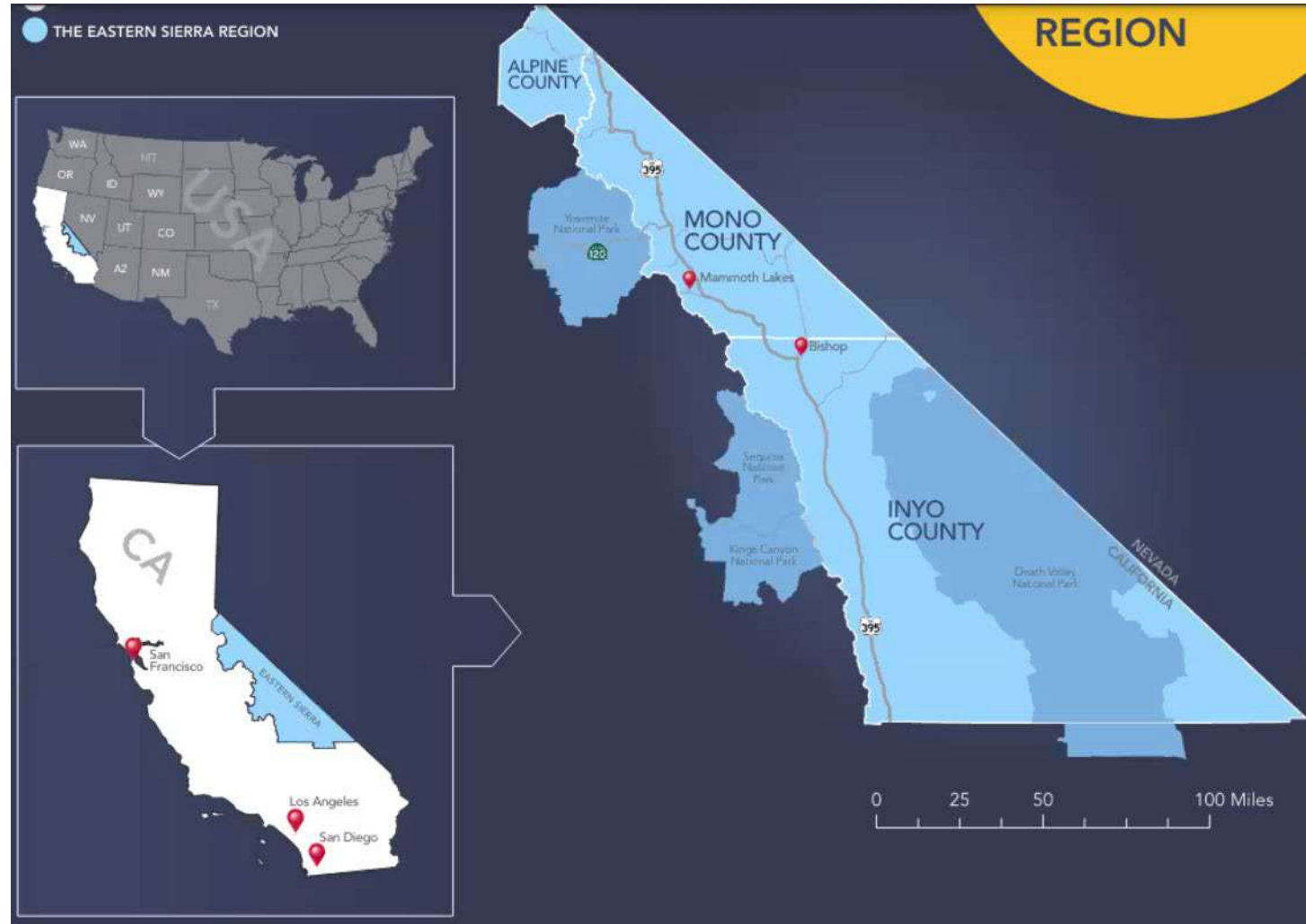
EASTERN SIERRA SCENIC BYWAY ANALYSIS

SRTI PROJECT

20/21

Vision

The Eastern Sierra Towns to Trails Plan will **identify a backbone trail, following existing infrastructure and uses, that will connect Eastern Sierra communities, public lands, and destinations south and north.** The project parallels the Eastern Sierra escarpment (west of Highway 395), from northern Alpine County, through Mono County, and on into southern Inyo County, over approximately 200 miles.



Goals

- **Connect Eastern Sierra communities through a public-lands experience**
- Leverage existing regional partnerships
- Establish implementation roadmap
- Bring economic benefit to communities
- Enhance recreational opportunities
- Commit to sustainable recreation
- Identify gaps and opportunities for connectivity to existing and future networks
- **Identify segments for short-term implementation**

Coordination + Outreach



Agency and Tribal Partner Roles

- Establishing Key Agreements
- Collaborative Problem Solving
- Providing Insight/Data on Potential Trail Network Gap Closure
- Defining/Identifying Pilot Projects/Short Term Wins

Collaborative Planning Groups and Meetings

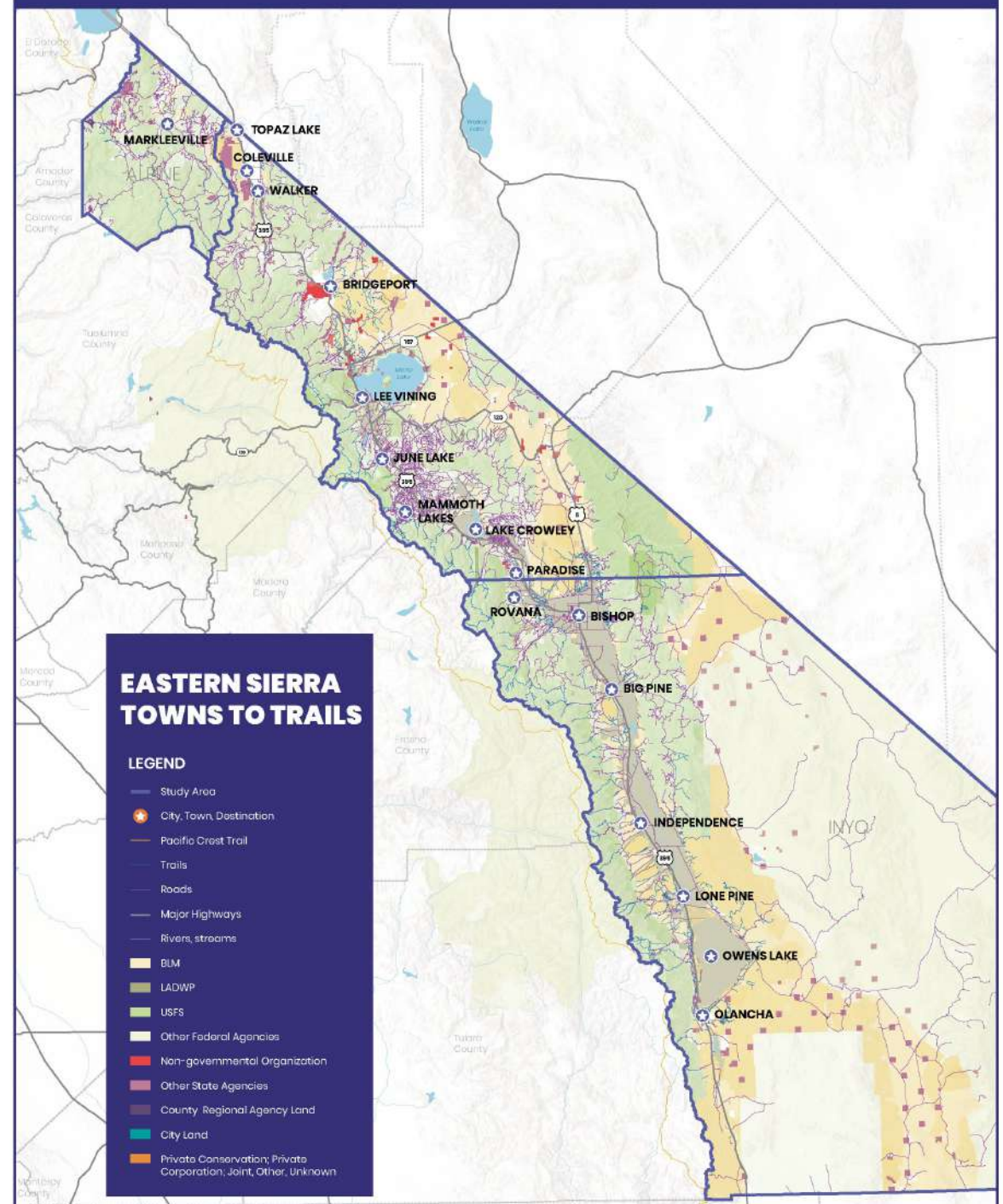
- Agency and Tribal Partners (key agreements)
- All/General Regional Stakeholders (knowledge/recruitment)
- Alpine County Stakeholders Including Public (application)
- Inyo County Stakeholders Including Public (application)
- Mono County Stakeholders Including Public (application)
- Eastern Sierra Sustainable Recreation Partnership (awareness)

Route Development

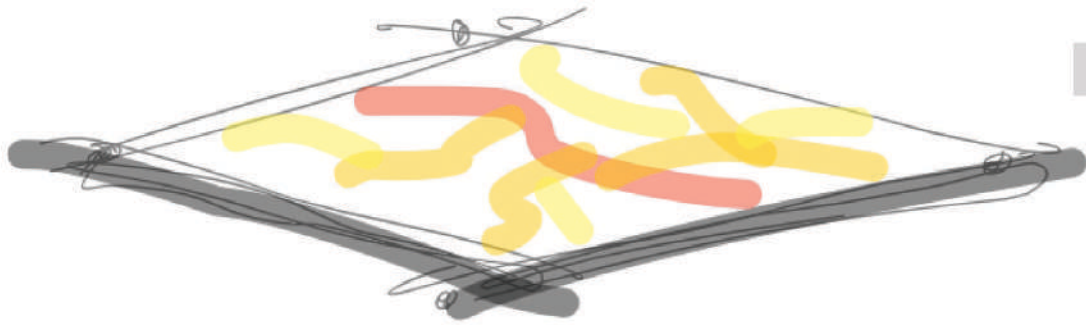


Network Inventory Study Area

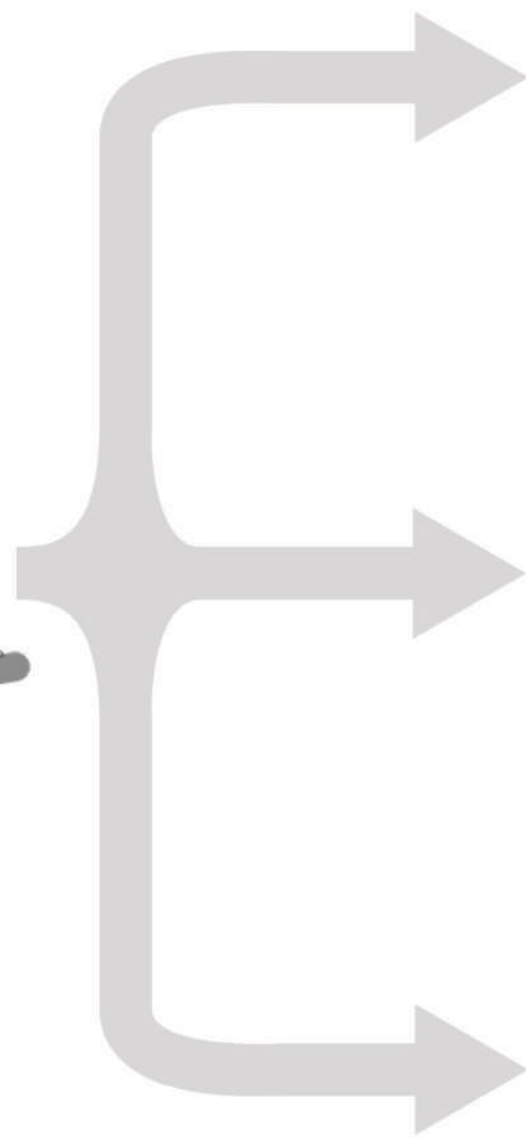
- 10+ road/trail data layers
- County, USFS, BLM, LADWP



EXISTING ROAD & TRAIL NETWORK



Roads that are closed, restricted, or otherwise not accessible to the public are excluded



TIER 1



- Unpaved/Soft Surface Trails
- USFS Class 2 - 5 Trails
- Motorized Single Track Trails on BLM Land



TIER 2



- Unpaved Roads



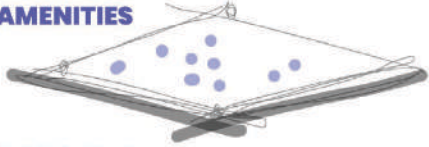
TIER 3



- Paved Roads
- USFS Class 1 Trails

RASTER INPUTS

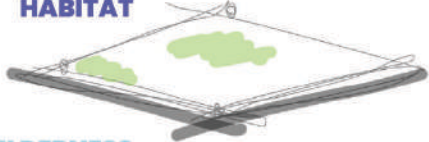
DESTINATIONS & AMENITIES



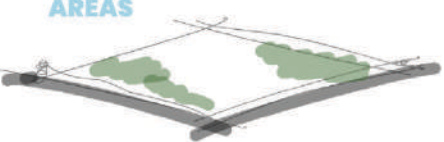
EXISTING ROAD & TRAIL NETWORK



SAGE GROUSE HABITAT



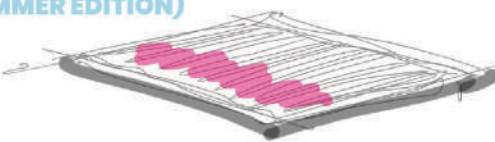
USFS WILDERNESS AREAS



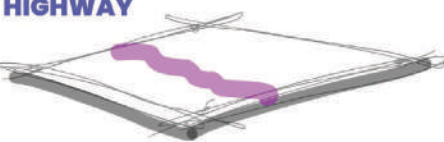
SLOPE



ELEVATION (SUMMER EDITION)

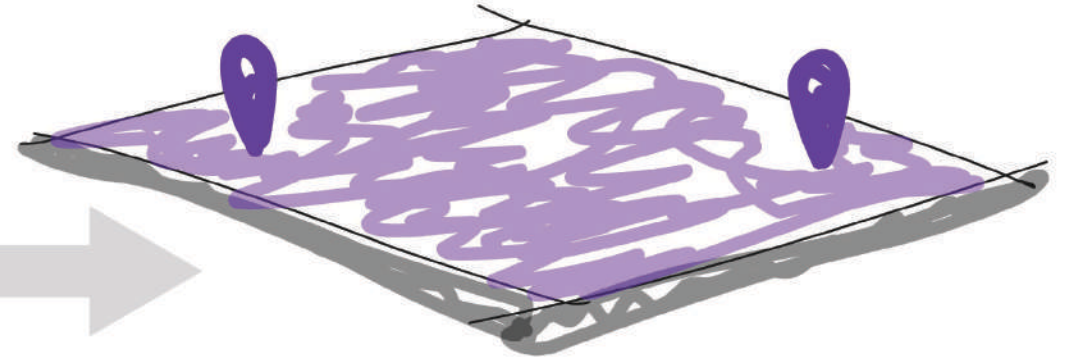


PROXIMITY TO HIGHWAY

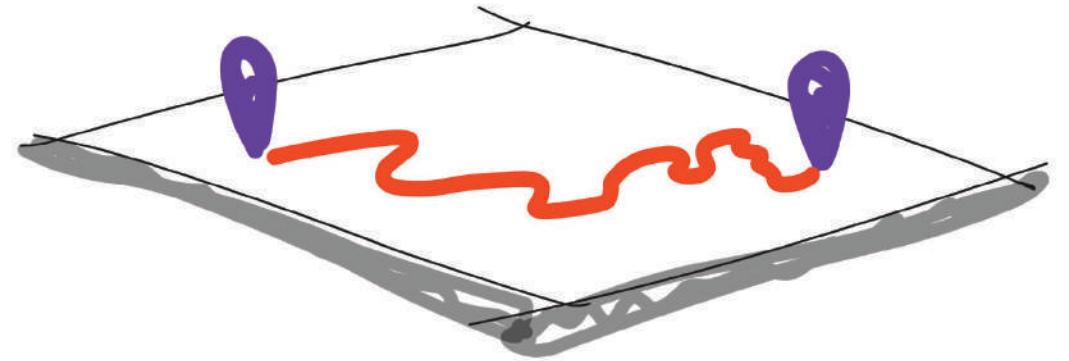


Raster inputs are combined and weighted

COST SURFACE



GIS processes a least cost path between a start point and end point



LEAST COST PATH

MAPBOOKS

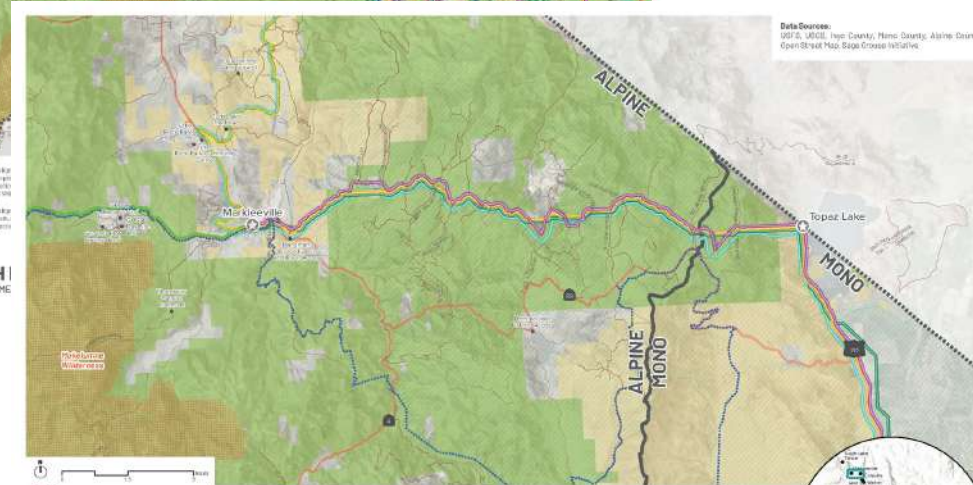
- Alignments are not mutually exclusive
- Each crossing of alignments is a potential opportunity
- Mark up!
 - Alignments you like
 - Alignments you don't
 - Key destinations
 - Gaps, missing trails, etc.



5 BIG PINE TO BISHOP
TOWNS TO TRAILS - EASTERN SIERRA COUNCIL OF GOVERNMENTS

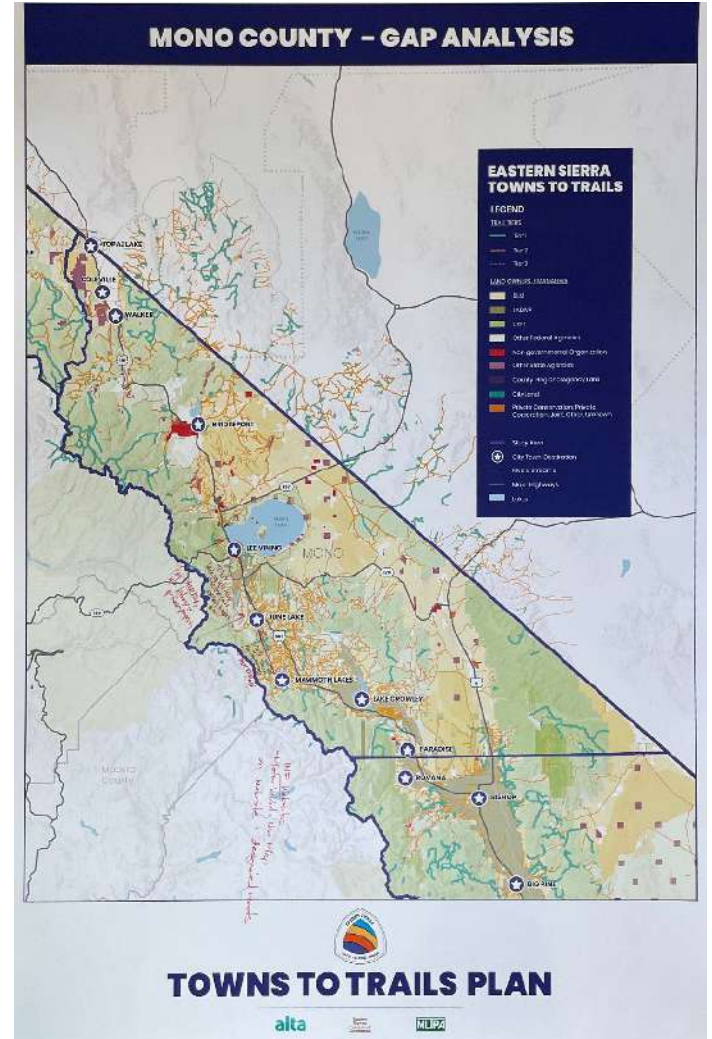
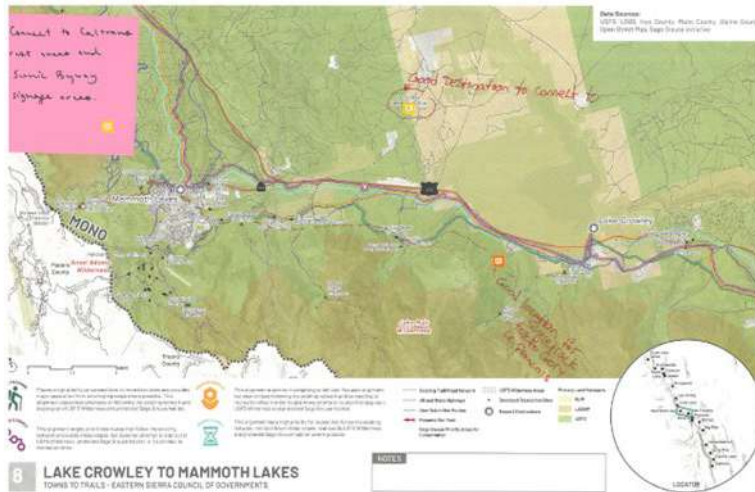
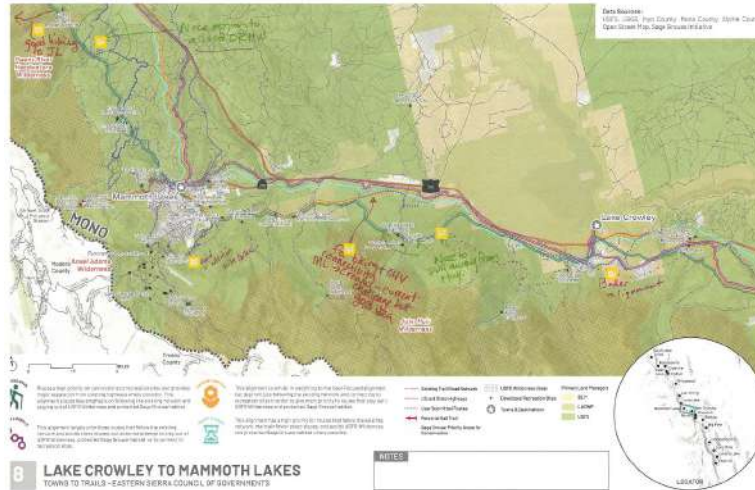


8 LAKE CROWLEY TO MAMMOTH
TOWNS TO TRAILS - EASTERN SIERRA COUNCIL OF GOVERNMENTS

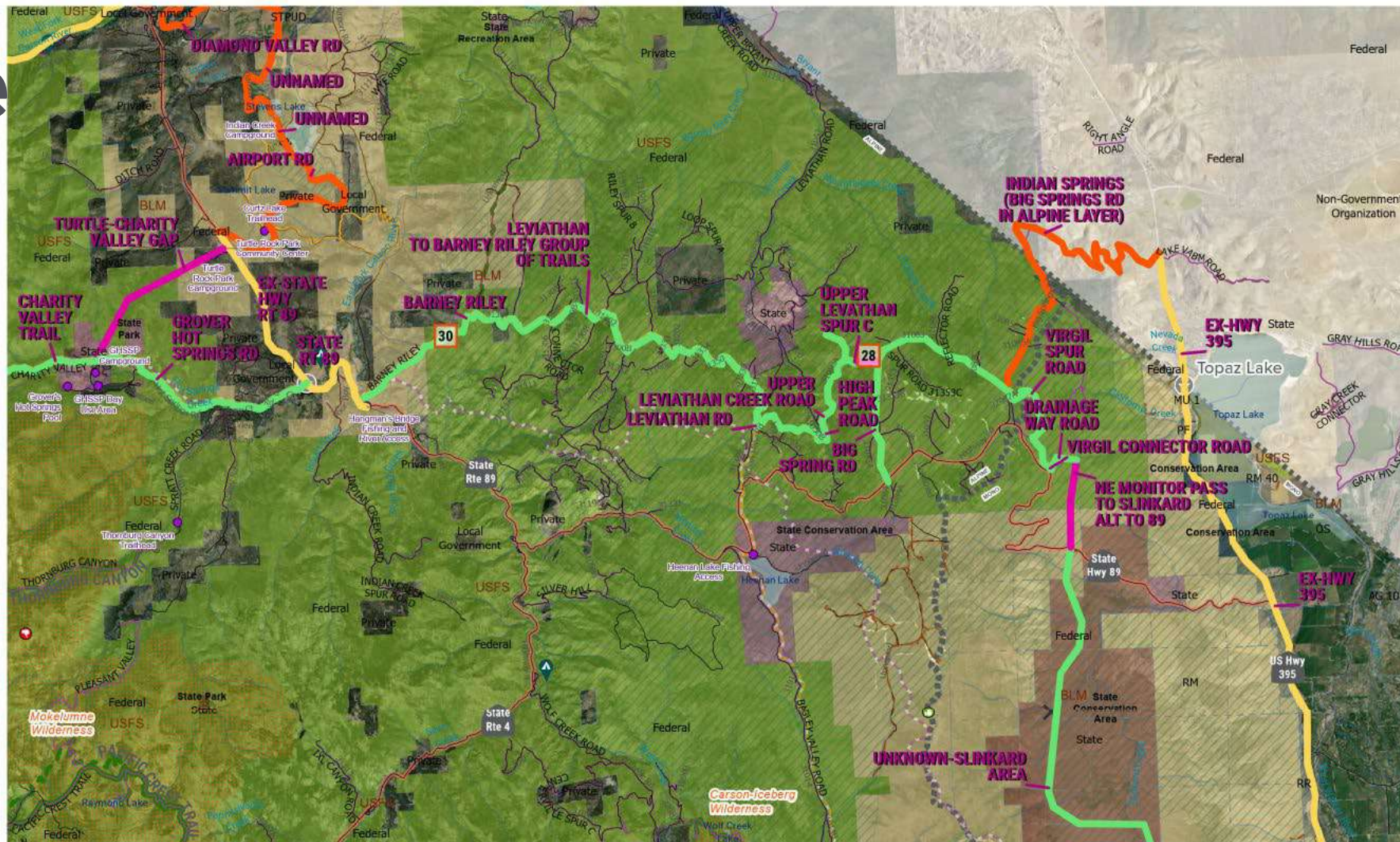


14 TOPAZ LAKE TO MARKLEEVILLE
TOWNS TO TRAILS - EASTERN SIERRA COUNCIL OF GOVERNMENTS

Collaborative Planning Workshops



Alpine



- ALIGNMENT OPTIONS**
- Base
 - Highway
 - Spur
 - Gap

LOCAL LOOP

BISHOP AREA MTB TRAIL RATING REFERENCE

0 0.55 1.1 MILES

EXISTING TRAILS

- Motorized
- Non-Mechanized
- Non-Motorized
- USFS Wilderness Areas
- Sage Grouse Cons Priority
- Mono Inyo Transmission lines
- County Boundaries

14 TOPAZ LAKE TO MARKLEEVILLE

- INYO NATIONAL FOREST ROADS**
- Not op to pub until mitig comp
 - Oth Non-FS Rd
 - Oth Non-FS Rd Trail
 - Road does not exist
 - Road open to all vehicles
 - R op to all veh seas
 - R op to hwy lgl veh
 - Tr op to all veh
 - Tr op to all veh seas
 - Tr op to motoC only
 - Trail op to veh 50" Less

- MANAGING AGENCIES**
- BLM
 - LADWP
 - USFS
 - Oth Fed Agency
 - Non-Gov Org
 - Oth State Agency
 - Cnty / Reg Agency
 - City Land

- CONNECTIONS**
- Towns & Destinations (2)
 - Dev Rec Sites (10)
 - Connections (2)

- COMMENT SENTIMENT ROUND 1**
- Doesn't exist
 - Not recommended
 - Positive response

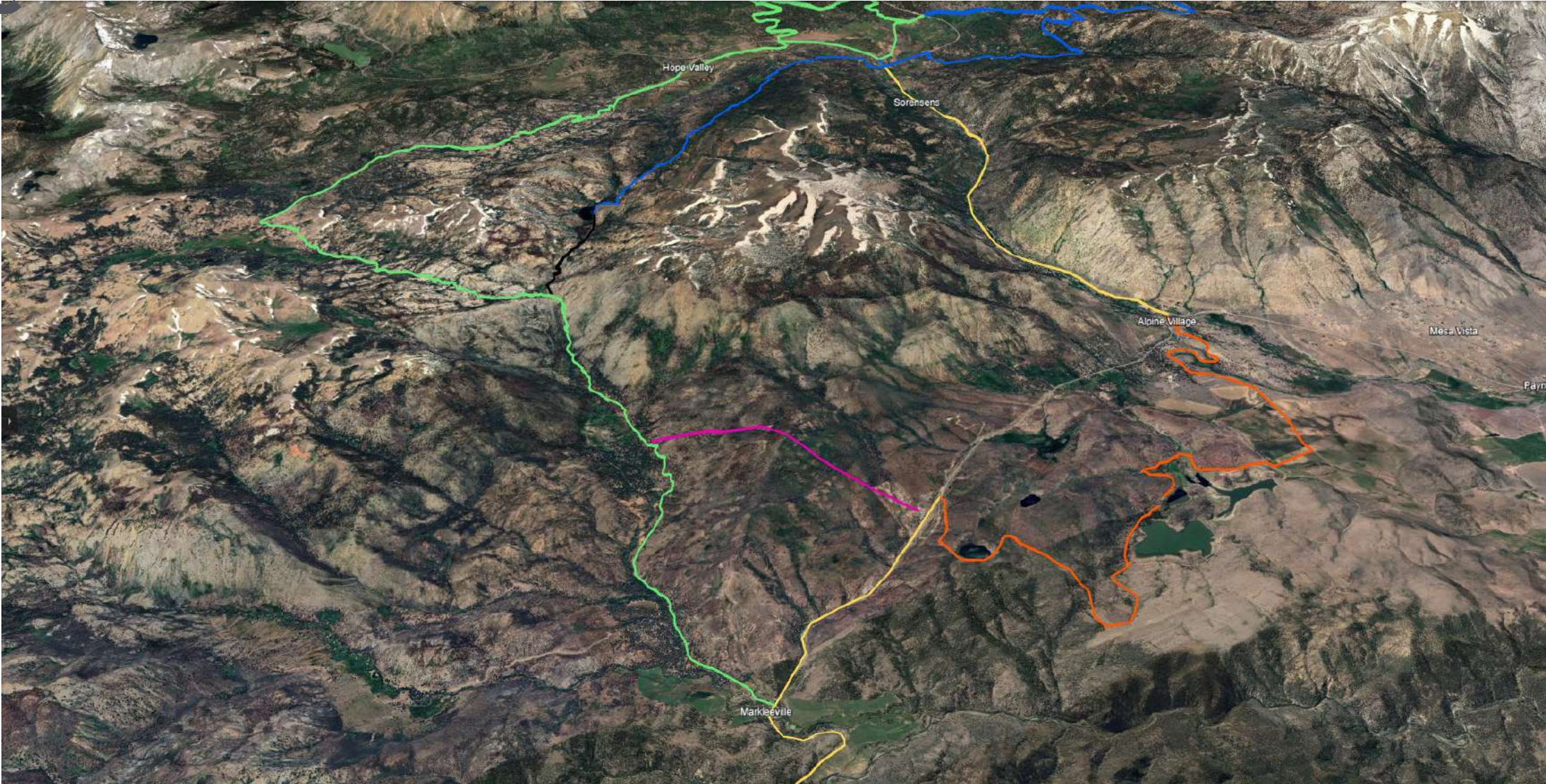
LANDSCAPE COMMENTS ROUND 1

- ROUND 2 PARTNER COMMENTS**
- Neutral

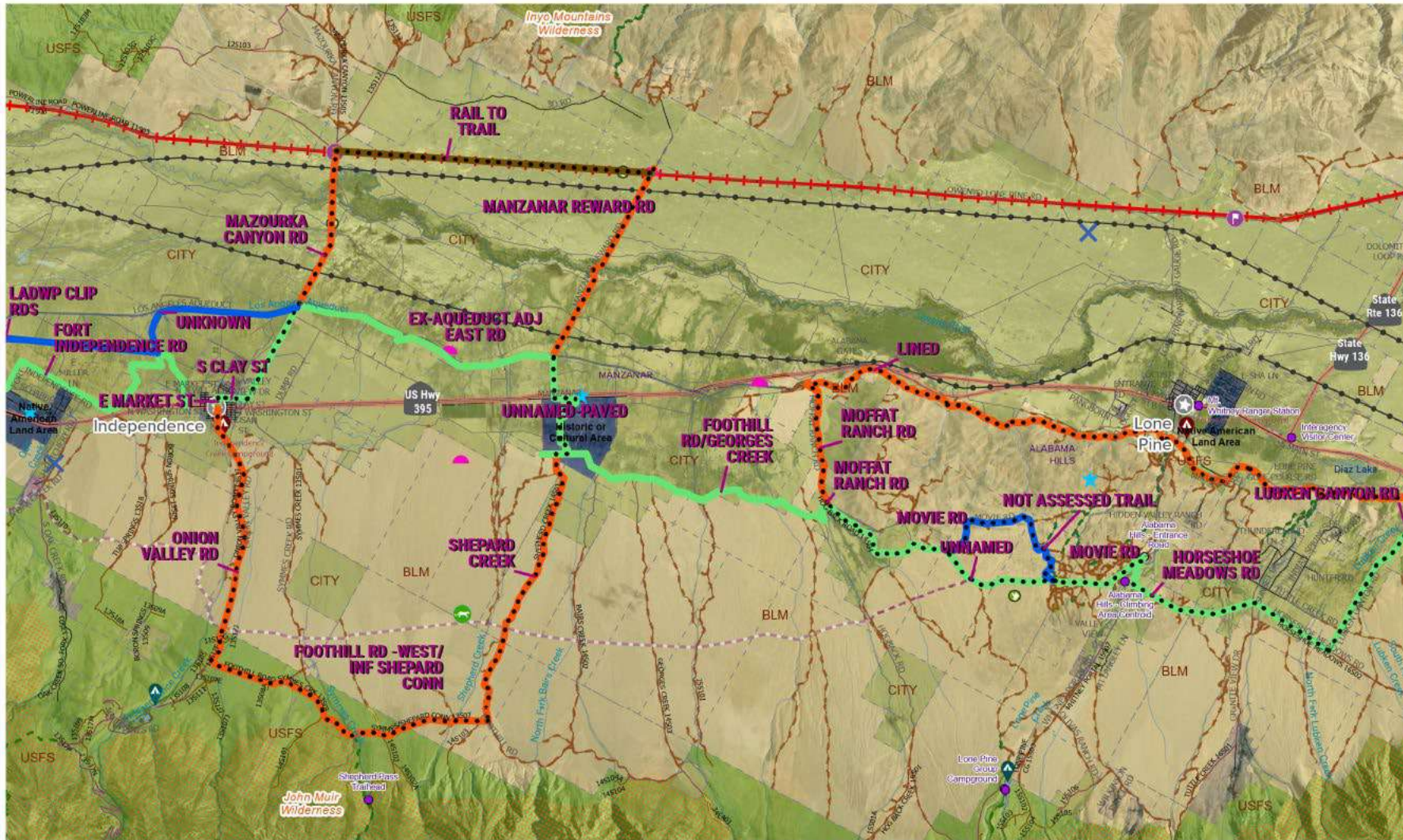


LOCATOR

Alpine



Inyo



- ALIGNMENT OPTIONS**
- Base
 - Alternate Route
 - Spur
 - RTT

- LOCAL LOOP**
- Local Loop

BISHOP AREA MTB TRAIL RATING REFERENCE

- EXISTING TRAILS**
- Motorized
 - Non-Mechanized
 - Non-Motorized
 - USFS Wilderness Areas
 - Sage Grouse Cons Priority
 - Mono Inyo Transmission lines
 - County Boundaries

- INYO NATIONAL FOREST ROADS**
- Not op to pub until mitg comp
 - Oth Non-FS Rd
 - Oth Non-FS Rd Trail
 - Road does not exist
 - Road open to all vehicles
 - R op to all veh seas
 - R op to hwy lgl veh
 - Tr op to all veh
 - Tr op to all veh seas
 - Tr op to motoC only
 - Trail op to veh 50" Less

- MANAGING AGENCIES**
- BLM
 - LADWP
 - USFS
 - Oth Fed Agency
 - Non-Gov Org
 - Oth State Agency
 - Cnty / Reg Agency
 - City Land

- CONNECTIONS**
- Towns & Destinations (2)
 - Dev Rec Sites (7)
 - Connections (3)
 - Inyo Cty Campgrounds (2)

- COMMENT SENTIMENT ROUND 1**
- Positive response
 - Proposed
 - Question

- LANDSCAPE COMMENTS ROUND 1**
- Washout
 - Wilderness
- ROUND 2 PARTNER COMMENTS**

3 LONE PINE TO INDEPENDENCE

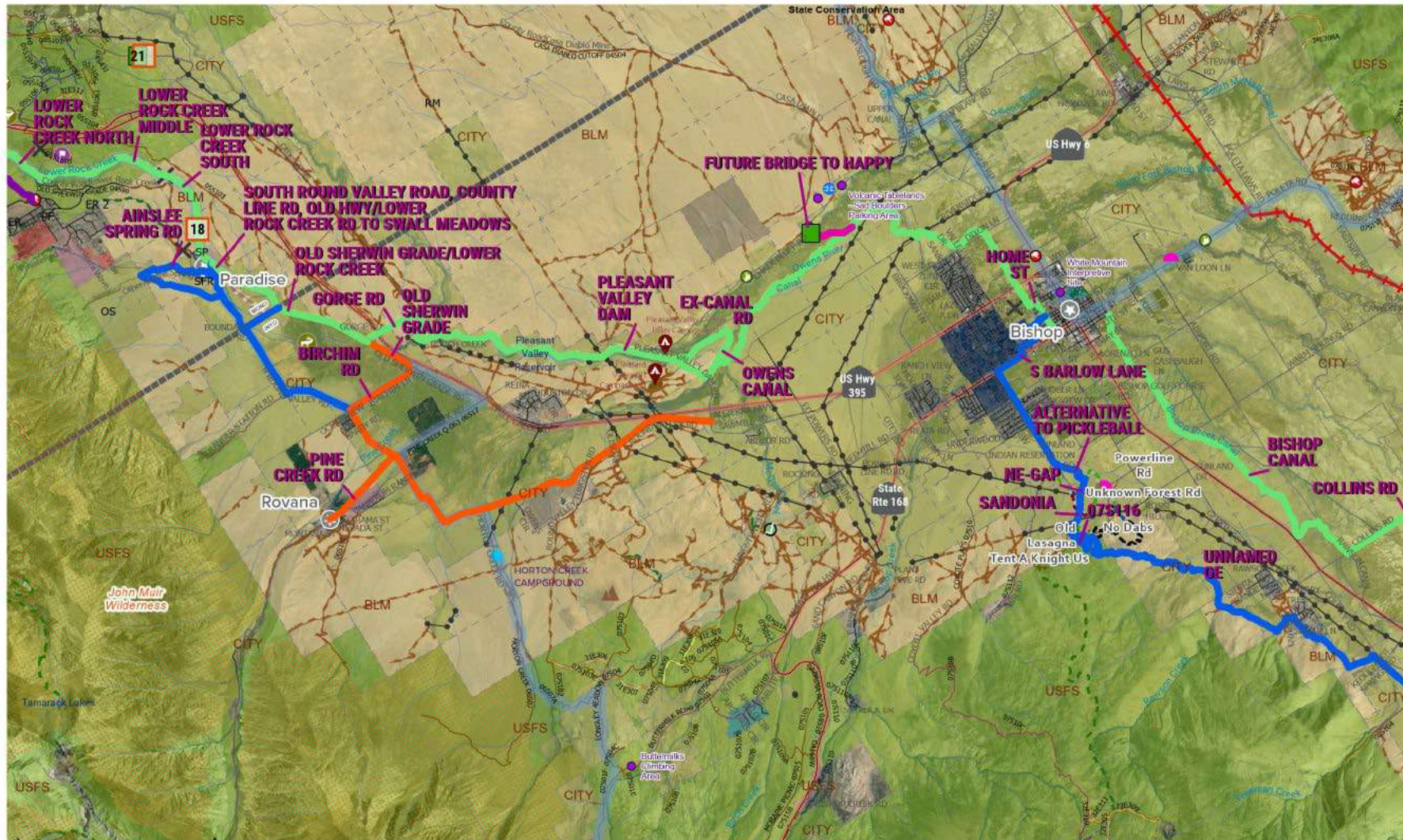


LOCATOR

Inyo



Mono



- ALIGNMENT OPTIONS**
- Base
 - Alternate Route
 - Spur
 - Gap
 - Equestrian

- BISHOP AREA MTB TRAIL RATING REFERENCE**
- Blue
 - Access-DoubleTrack
 - Green
 - Black



- EXISTING TRAILS**
- - - Motorized
 - Non-Mechanized
 - - - Non-Motorized
 - USFS Wilderness Areas
 - Sage Grouse Cons Priority
 - Mono Inyo Transmission lines
 - County Boundaries

- INYO NATIONAL FOREST ROADS**
- Not op to pub until mitg comp
 - Oth Non-FS Rd
 - Oth Non-FS Rd Trail
 - Road does not exist
 - Road open to all vehicles
 - R op to all veh seas
 - R op to hwy lgl veh
 - Tr op to all veh
 - Tr op to all veh seas
 - Tr op to motoC only
 - Trail op to veh 50" Less

- MANAGING AGENCIES**
- BLM
 - LADWP
 - USFS
 - Oth Fed Agency
 - Non-Gov Org
 - Oth State Agency
 - Cnty / Reg Agency
 - City Land

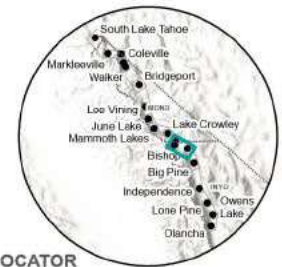
- CONNECTIONS**
- Towns & Destinations (3)
 - Dev Rec Sites (5)
 - Connections (1)
 - Inyo Cty Campgrounds (2)

- COMMENT SENTIMENT ROUND 1**
- Doesn't exist
 - Existing
 - Not recommended
 - Positive response
 - Proposed
 - Question

- LANDSCAPE COMMENTS ROUND 1**
- Steep
 - Water Crossing
 - Wildlife Migration

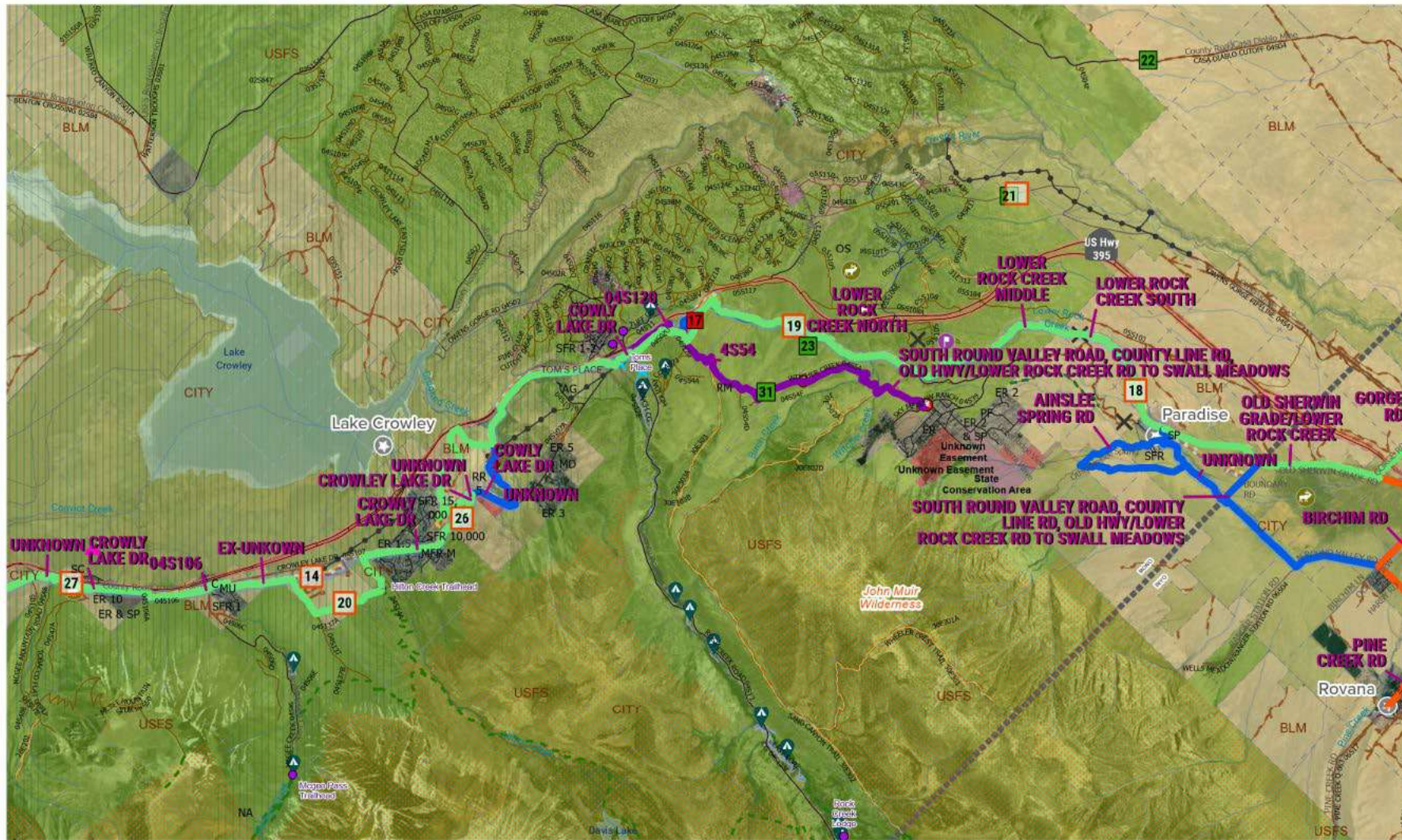
- ROUND 2 PARTNER COMMENTS**
- Neutral
 - Positive

6 BISHOP TO ROVANA TO PARADISE



LOCATOR

Mono



ALIGNMENT OPTIONS

- Base
- Alternate Route
- Spur
- Equestrian

BISHOP AREA MTB TRAIL RATING REFERENCE

ROUND 2 PARTNER COMMENTS

- Negative
- Neutral
- Positive



LOCATOR



- ### EXISTING TRAILS
- - - Motorized
 - - - Non-Mechanized
 - - - Non-Motorized
 - - - USFS Wilderness Areas
 - - - Sage Grouse Cons Priority
 - - - Mono Inyo Transmission lines
 - - - County Boundaries

- ### INYO NATIONAL FOREST ROADS
- Not op to pub until mitg comp
 - Oth Non-FS Rd
 - Oth Non-FS Rd Trail
 - Road does not exist
 - Road open to all vehicles
 - R op to all veh seas
 - R op to hwy lgl veh
 - Tr op to all veh
 - Tr op to all veh seas
 - Tr op to motoC only
 - Trail op to veh 50" Less

- ### MANAGING AGENCIES
- BLM
 - LADWP
 - USFS
 - Oth Fed Agency
 - Non-Gov Org
 - Oth State Agency
 - Cnty / Reg Agency
 - City Land

CONNECTIONS

- ★ Towns & Destinations (3)
- ★ Dev Rec Sites (6)
- ★ Connections (2)

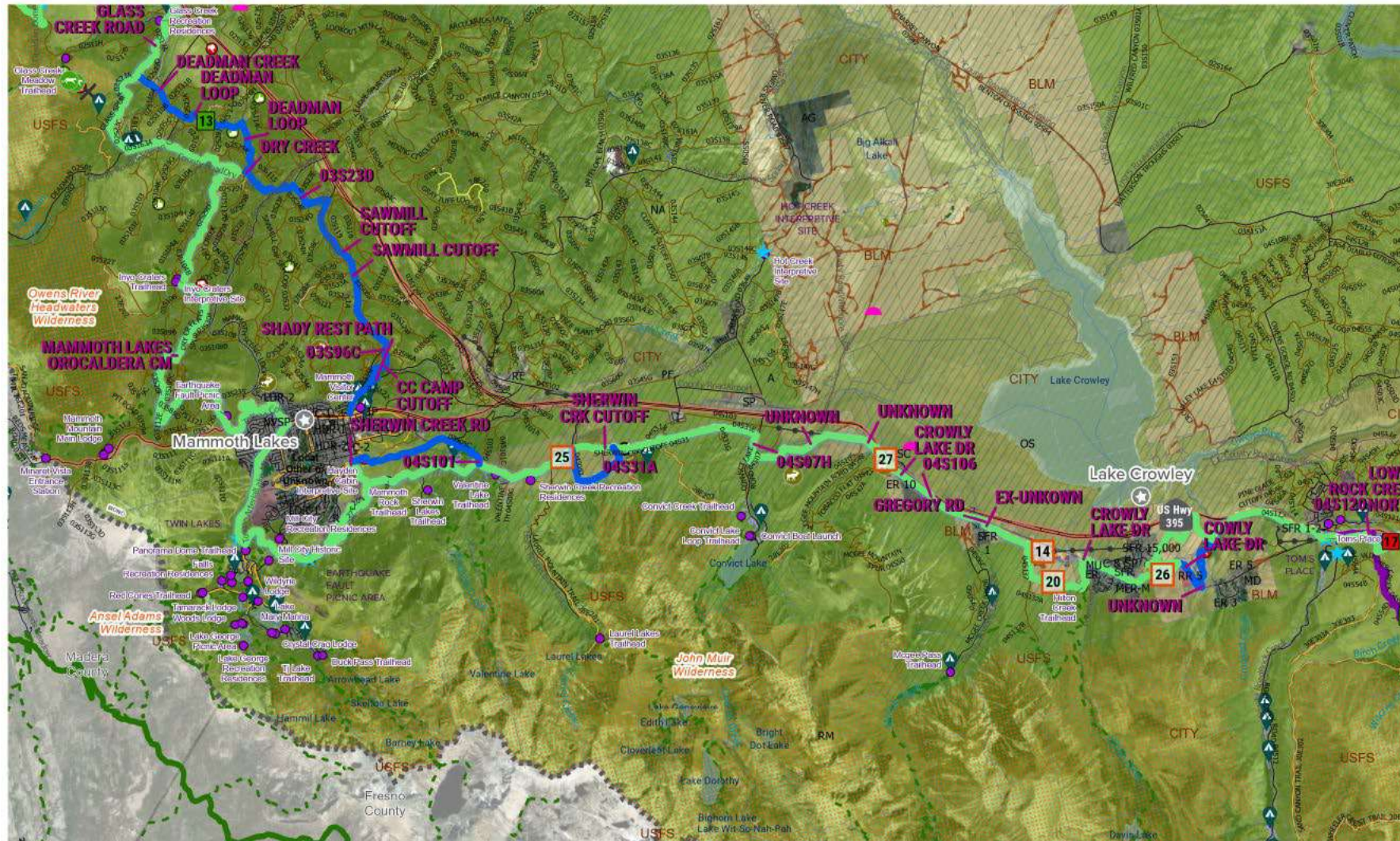
COMMENT SENTIMENT ROUND 1

- ✗ Doesn't exist
- Not recommended
- Proposed
- Question

LANDSCAPE COMMENTS ROUND 1

- ▲ Steep
- ▲ Wildlife Migration

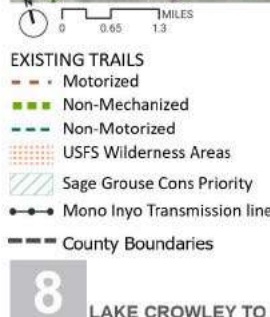
Mono



ALIGNMENT OPTIONS

- Base
- Alternate Route
- Equestrian

BISHOP AREA MTB TRAIL RATING REFERENCE



INYO NATIONAL FOREST ROADS

- Not op to pub until mitg comp
- Oth Non-FS Rd
- Oth Non-FS Rd Trail
- Road does not exist
- Road open to all vehicles
- R op to all veh seas
- R op to hwy lgl veh
- Tr op to all veh
- Tr op to all veh seas
- Tr op to motoC only
- Trail op to veh 50" Less

MANAGING AGENCIES

- BLM
- LADWP
- USFS
- Oth Fed Agency
- Non-Gov Org
- Oth State Agency
- Cnty / Reg Agency
- City Land

CONNECTIONS

- ★ Towns & Destinations (2)
- Dev Rec Sites (47)
- ★ Connections (6)

COMMENT SENTIMENT ROUND 1

- ✗ Doesn't exist
- ✔ Existing
- Not recommended
- Positive response
- ? Question

LANDSCAPE COMMENTS ROUND 1

- ▲ Steep
- 🌿 Wilderness
- 🐾 Wildlife Migration

ROUND 2 PARTNER COMMENTS

- Negative
- Neutral
- Positive



LOCATOR

Mono



- ALIGNMENT OPTIONS**
- Base
 - Alternate Route
 - Spur
 - Gap

BISHOP AREA MTB TRAIL RATING REFERENCE



- EXISTING TRAILS**
- Motorized
 - Non-Mechanized
 - Non-Motorized
 - USFS Wilderness Areas
 - Sage Grouse Cons Priority
 - Mono Inyo Transmission lines
 - County Boundaries
- INOYO NATIONAL FOREST ROADS**
- Not op to pub until mitg comp
 - Oth Non-FS Rd
 - Oth Non-FS Rd Trail
 - Road does not exist
 - Road open to all vehicles
 - R op to all veh seas
 - R op to hwy lgl veh
 - Tr op to all veh
 - Tr op to all veh seas
 - Tr op to motoC only
 - Trail op to veh 50" Less

- MANAGING AGENCIES**
- BLM
 - LADWP
 - USFS
 - Oth Fed Agency
 - Non-Gov Org
 - Oth State Agency
 - Cnty / Reg Agency
 - City Land

- CONNECTIONS**
- ★ Towns & Destinations (2)
 - Dev Rec Sites (52)
 - ★ Connections (3)

- COMMENT SENTIMENT ROUND 1**
- ✗ Doesn't exist
 - ✔ Existing
 - ⊘ Not recommended
 - ⊘ Positive response
 - ? Question

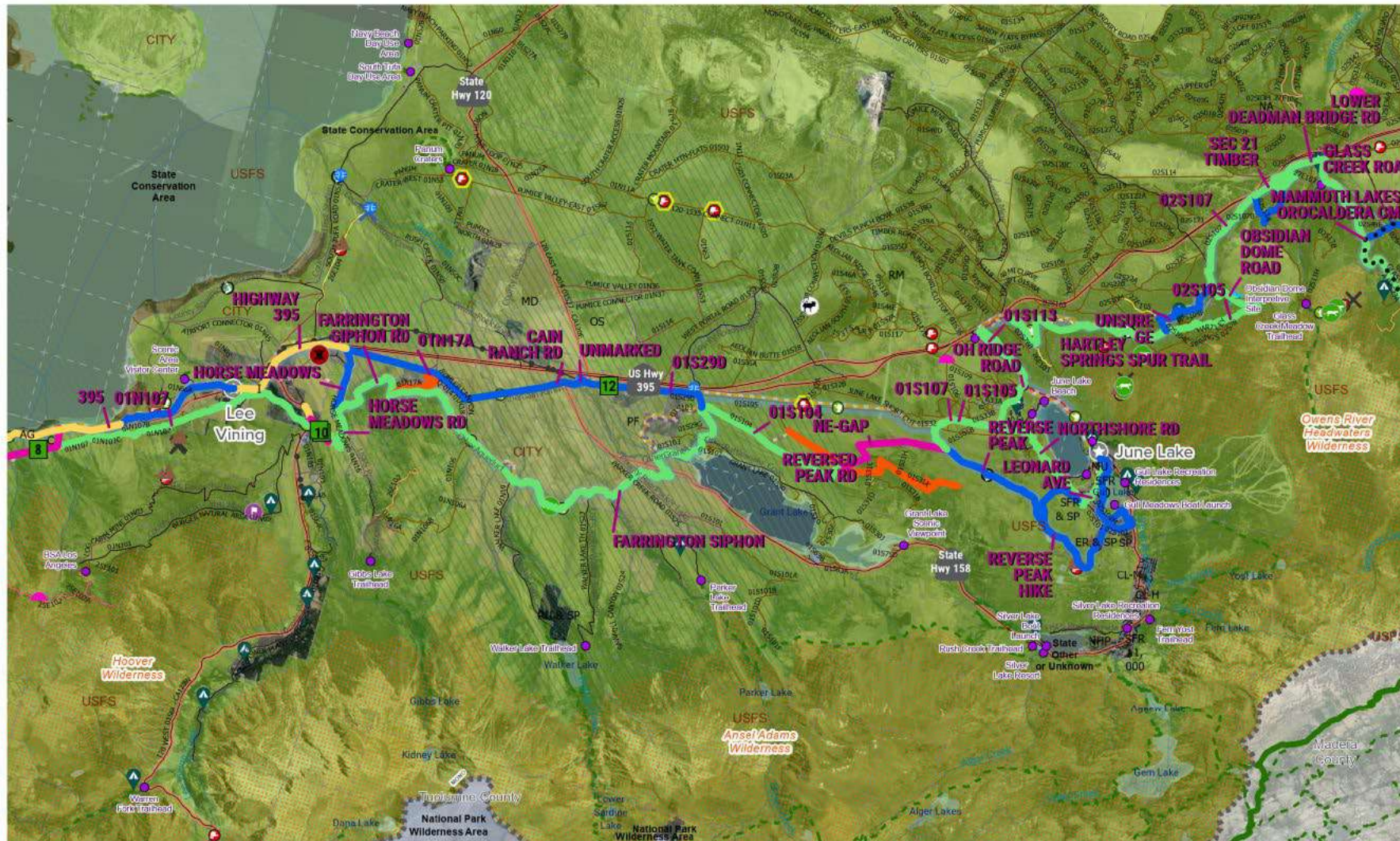
- LANDSCAPE COMMENTS ROUND 1**
- 🐄 Grazing
 - ⬡ Sandy
 - ▲ Steep
 - 🌲 Wilderness
 - 🐾 Wildlife Migration

- ROUND 2 PARTNER COMMENTS**
- Neutral
 - Positive



LOCATOR

Mono



- ALIGNMENT OPTIONS**
- Base
 - Alternate Route
 - Highway
 - Spur
 - Gap

- LOCAL LOOP**
- Local Loop

BISHOP AREA MTB TRAIL RATING REFERENCE

10 JUNE LAKE TO LEE VINNING

0 0.55 1.1 MILES

EXISTING TRAILS

- - - Motorized
- Non-Mechanized
- - - Non-Motorized
- USFS Wilderness Areas
- Sage Grouse Cons Priority
- Mono Inyo Transmission lines
- County Boundaries

- INYO NATIONAL FOREST ROADS**
- Not op to pub until mitg comp
 - Oth Non-FS Rd
 - Oth Non-FS Rd Trail
 - Road does not exist
 - Road open to all vehicles
 - R op to all veh seas
 - R op to hwy lgl veh
 - Tr op to all veh
 - Tr op to all veh seas
 - Tr op to motoC only
 - Trail op to veh 50" Less

- MANAGING AGENCIES**
- BLM
 - LADWP
 - USFS
 - Oth Fed Agency
 - Non-Gov Org
 - Oth State Agency
 - Cnty / Reg Agency
 - City Land

- CONNECTIONS**
- ★ Towns & Destinations (2)
 - Dev Rec Sites (27)
 - ★ Connections (1)

- COMMENT SENTIMENT ROUND 1**
- ✗ Doesn't exist
 - ⊙ Existing
 - ⊙ Not recommended
 - ⊙ Positive response
 - ⊙ Proposed
 - ⊙ Question

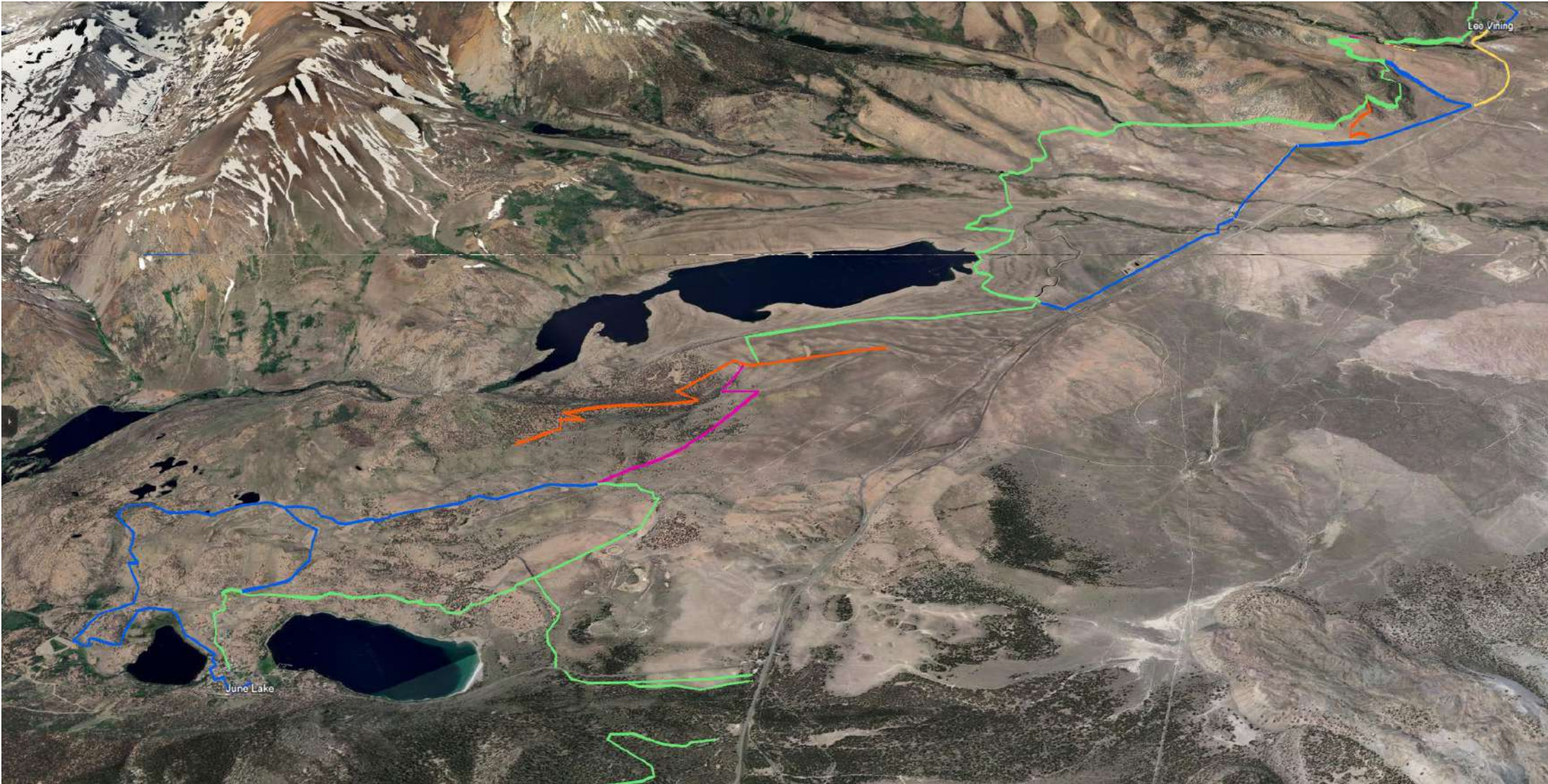
- LANDSCAPE COMMENTS ROUND 1**
- 🐄 Grazing
 - 🟡 Sandy
 - ⚠ Steep
 - ⚡ Washout
 - 🌊 Water Crossing
 - 🌲 Wilderness

- ROUND 2 PARTNER COMMENTS**
- 🟢 Positive
 - 🔴 Remove



LOCATOR

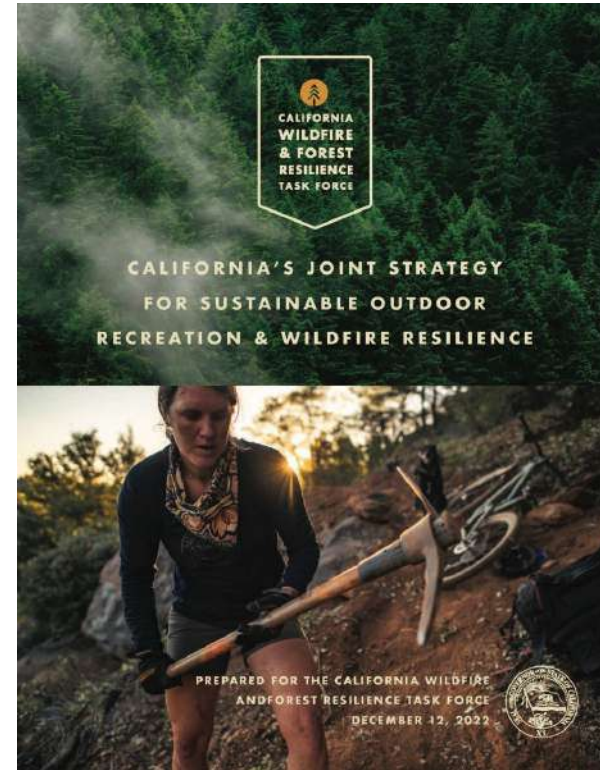
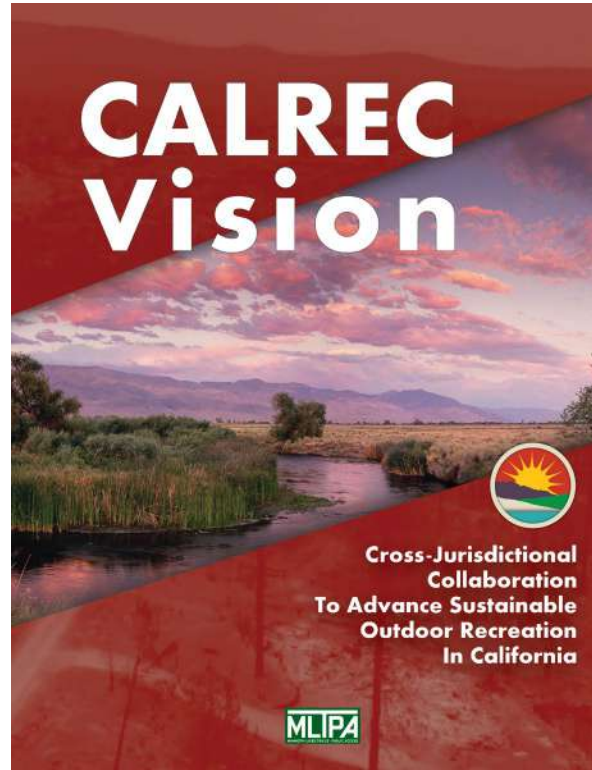
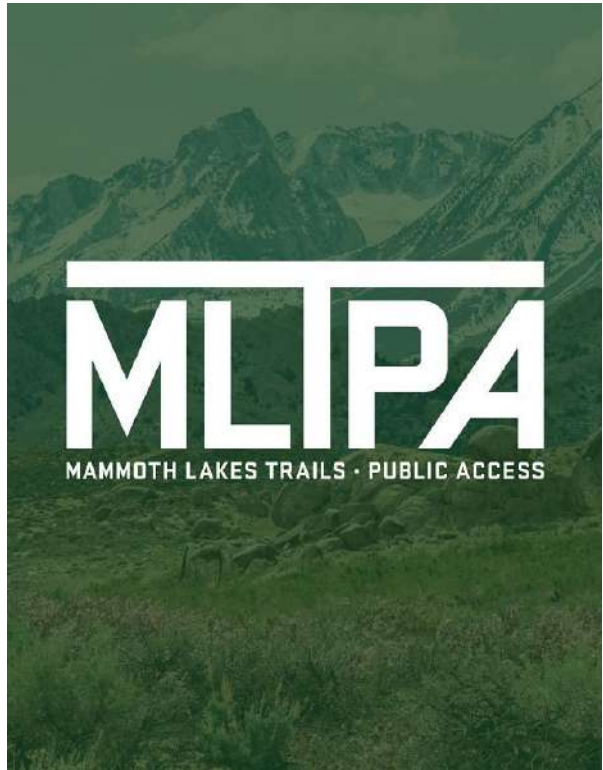
Mono



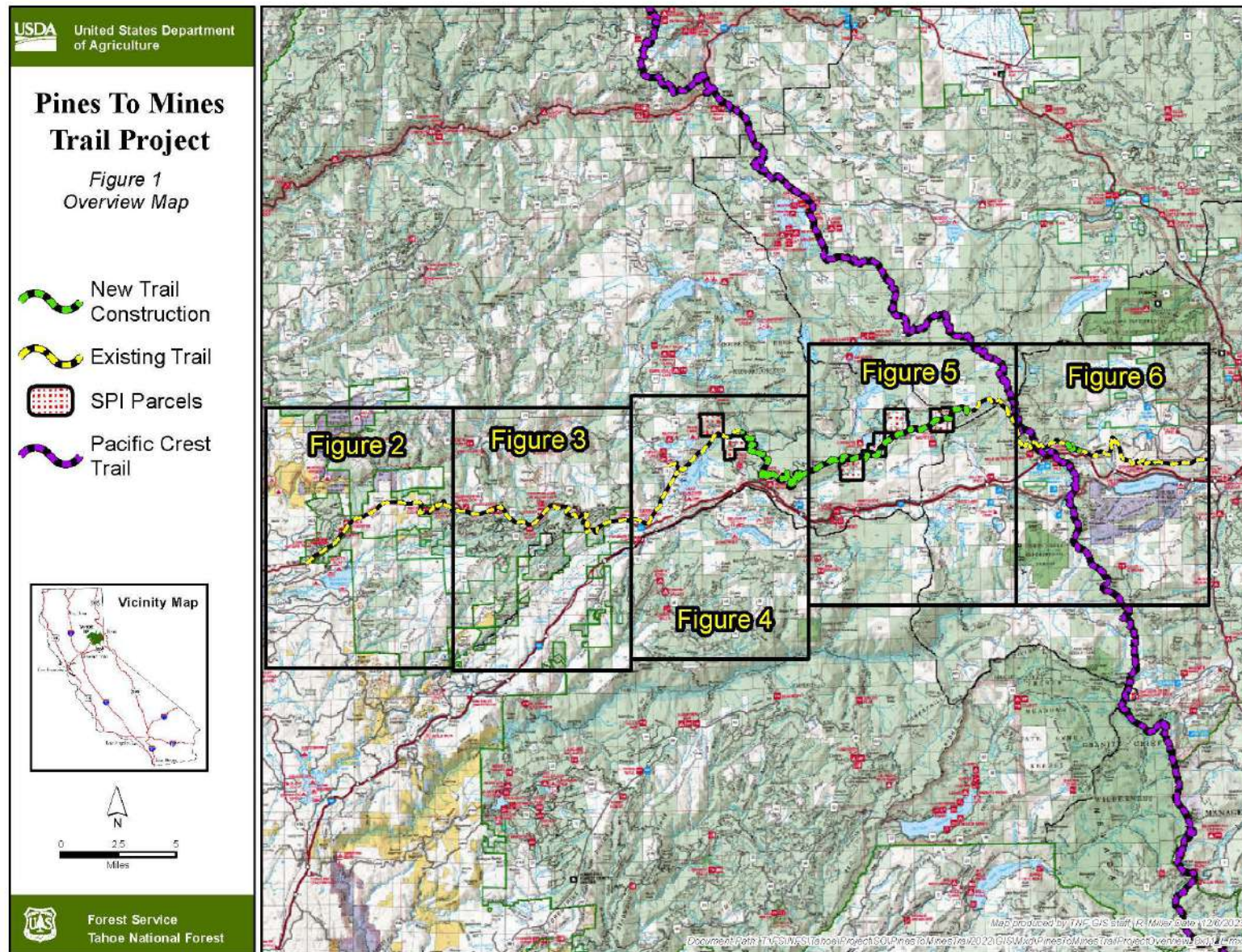
Broader Context



Sierra Nevada Region Trail Systems



Sierra Nevada Region Trail Systems: Pines to Mines



Sierra Nevada Region Trail Systems: Connected Communities



Connected Communities Project



The Connected Communities Project aims to stimulate the economies of rural communities by improving trail access and connectivity and encouraging diverse user types to explore and recreate on public lands by linking 15 mountain towns by trails.

Introduction

The Connected Communities Project is a visionary effort led in partnership by federal land managers, SBTS, and community partners to connect 15 mountain towns for economic prosperity through outdoor recreation—an \$887 billion industry. It will create a vision for a recreation-focused lifestyle through community investment, shared stewardship, economic opportunity, and important new local jobs, all benefiting economically disadvantaged communities in California's Plumas, Sierra, Butte, Lassen, and Nevada Counties, as well as Washoe County, Nevada. Our work will include planning, environmental review, trail creation, and maintenance of trails. The project's intent is to diversify recreation throughout the region and provide economic stability, as well as support fire recovery and prevention efforts. This project will create a learning landscape for outdoor and environmental education programs that include youth employment and volunteer participation. Our visionary goal is to establish a multi-use signature route highlighting these communities, which we are calling the Lost Sierra Route.

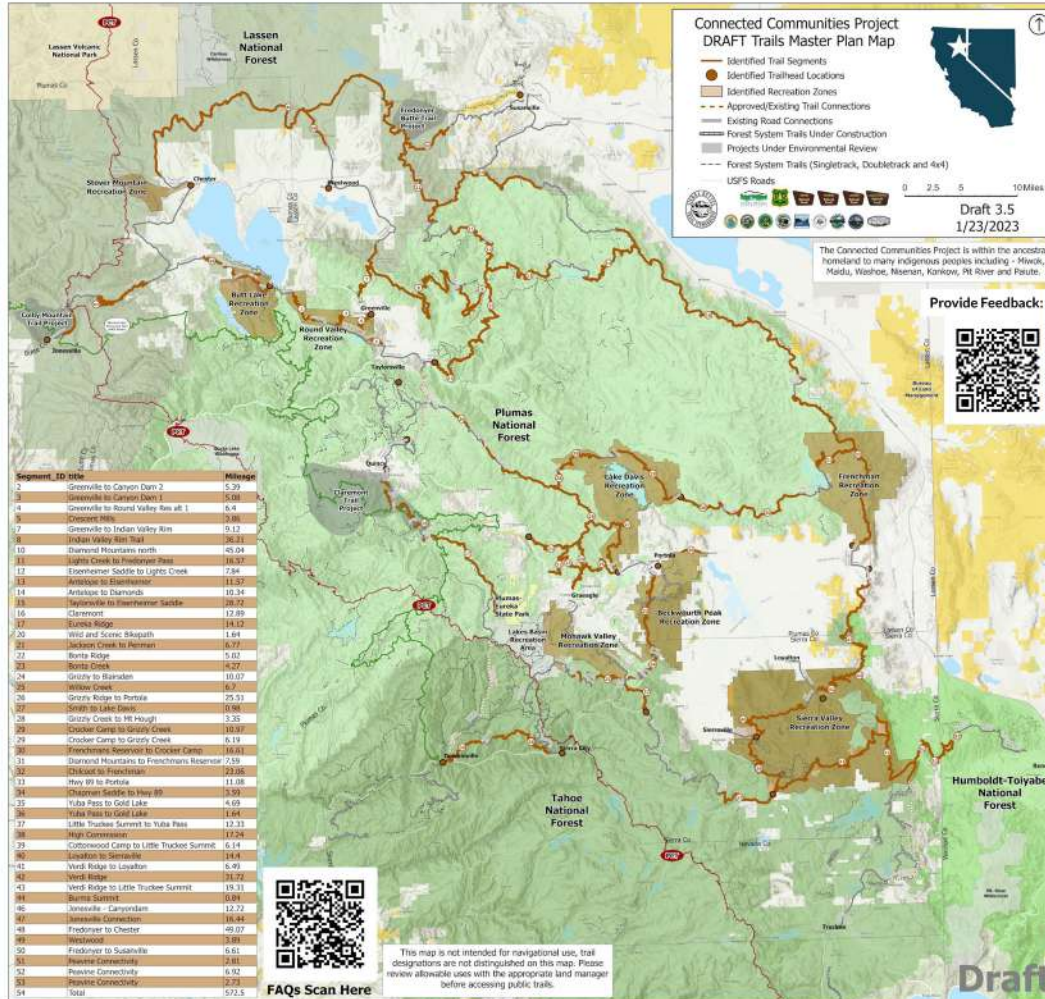
Goals & Objectives

The Connected Communities Project includes four main components:

1. Identify ideal trail corridors for a singletrack trail network to connect communities across the region and outline a signature route through the region dubbed the Lost Sierra Route
2. Conceptualize capital improvement projects required to support the trail network such as trailhead infrastructure
3. Highlight Recreation Zones as areas near communities that warrant additional planning and development
4. Develop desired conditions for fuels reduction and restoration within future project planning areas

Acknowledgements

While this project would not be possible without the critical partnership from federal land managers and continued community-member support, financial backing is also critical to the project's success. To date, the project has been primarily funded by Sierra Nevada Conservancy's Resilient Sierra Nevada Communities and Vibrant Recreation and Tourism programs, but has also received financial support from Friesen Foundation, California Off-Highway Vehicle Division grants, Outdoor Industry partners, and matching funds brought by SBTS volunteers and donors.



Segment ID	Trail Name	Mileage
1	Greenville to Canyon Dam 2	5.29
2	Greenville to Canyon Dam 1	5.08
4	Greenville to Round Valley Rim alt. 1	5.4
6	Greenville to Round Valley Rim alt. 2	20.81
7	Greenville to Indian Valley Rim	5.12
8	Indian Valley Rim Trail	26.21
10	Diamond Mountains north	49.04
11	Light's Creek to Frohner Pass	16.92
17	Edermeier Saddle to Light's Creek	7.84
18	Arctaspice to Diamonds	18.32
14	Arctaspice to Diamonds	10.34
16	Agayayale to Edermeier Saddle	28.22
15	Clemson	12.89
17	Eureka Ridge	18.12
20	Wild and Scenic Skywalk	1.64
21	Jackson Creek to Russian	6.72
22	Bonte Ridge	5.02
23	Bonte Creek	4.27
24	Grizzly to Russian	19.07
25	Yukon Creek	6.7
26	Grizzly Ridge to Portula	25.51
27	Grizzly to Little Truckee	20.96
28	Grizzly Creek to Mt Hough	3.35
29	Crocker Camp to Grizzly Creek	16.97
29	Crocker Camp to Grizzly Creek	6.19
30	Frenchmans Reservoir to Crocker Camp	16.61
31	Diamond Mountains to Frenchmans Reservoir	23.9
32	Chickadee to Frenchmans	23.06
33	Hwy 89 to Portula	11.08
34	Indian Valley Rim to Hwy 89	14.92
35	Yuba Pass to Gold Lake	4.69
36	Yuba Pass to Gold Lake	1.64
37	Little Truckee Summit to Yuba Pass	12.33
38	Hwy 89 to Frenchmans	17.24
39	Cottonwood Camp to Little Truckee Summit	6.14
40	Layton to Siskiyou	14.4
41	Ward Ridge to Layton	6.49
42	Ward Ridge	21.72
43	Ward Ridge to Little Truckee Summit	15.33
44	Burns Summit	0.81
46	Juneville - Canyonland	12.72
47	Juneville - Canyonland	18.44
48	Fredgor to Chester	49.07
49	Washoe	3.81
50	Fredgor to Susanville	6.55
51	Peakline Connectivity	2.81
52	Peakline Connectivity	6.92
53	Peakline Connectivity	22.78
54	Total	572.5

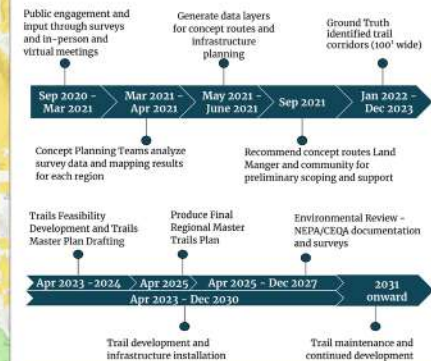
Project Components

572.5 mi Trail Segments - SBTS proposes single lane dirt trail development to Trail Class 2 Moderately Developed standard following Forest Service EM-7720-103 specification, adapted to local conditions. SBTS proposes motorized multi-use destination construction for enjoyment by all user types (hiking, trail running, mountain biking, e-biking, motorcycle riding and horseback).

21 Trailhead Locations - includes new and existing locations requiring infrastructure upgrades and site development

8 Recreation Zones - these are informal designations based on feedback gained from survey responses. They are identified as areas that warrant future additional recreation planning near communities and would include purpose built stacked loop trail systems with a focus on non-motorized opportunities.

Timeline



What It Will Take

We estimate a cost of around \$54.7 million to bring the Connected Communities Project to life:

- Phase 1: Planning— \$465,000
 - Funded by Sierra Nevada Conservancy and private donations
- Phase 2: Environmental Review— \$6.7 million
 - \$2.05/ft of proposed trail
- Phase 3: Construction - \$40.4 million
 - Includes trail development and infrastructure costs
- Phase 4 - Maintenance - \$2.3 million
 - Includes Annual trail Maintenance costs at \$.70/ft



Sierra Buttes Trail Stewardship (SBTS) SBTS started as a volunteer driven non-profit in 2003. SBTS is focused on building sustainable recreation-based communities through stewardship, job creation and world-class events. Providing quality outdoor experiences through trail construction and maintenance in the Lost Sierra.

2022 Accomplishments

- 67 Employees (30 youth)
- 25 Miles Trail Built
- 226 Miles Trail Maintained
- 592 Trail Volunteers
- 4,290 Volunteer Hours
- \$1.45 Million Gross payroll

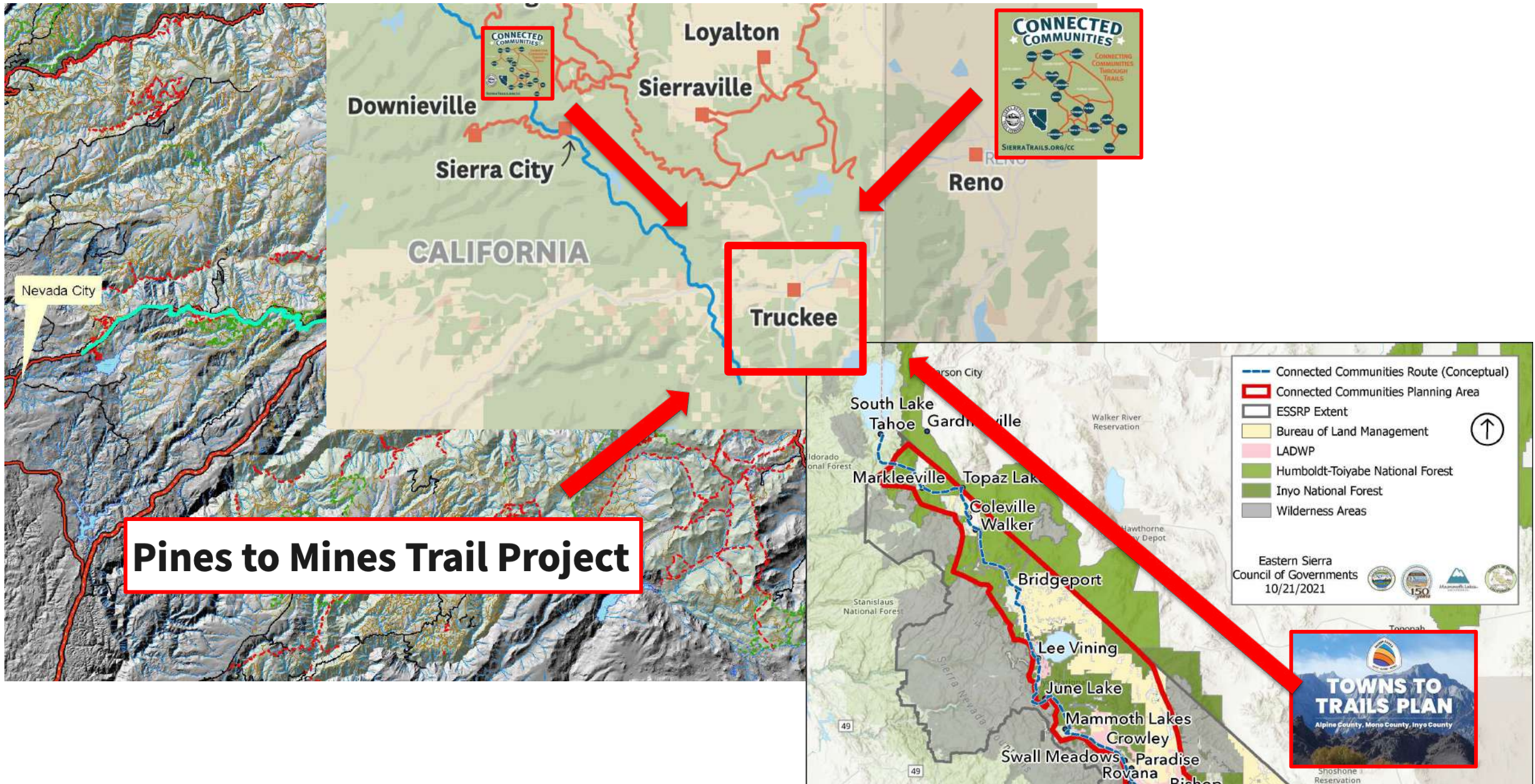
Get Involved



Contact

Trinity Stirling, Project Manager, trinity@sierratrails.org
 Greg Williams, Executive Director, willie@sierratrails.org
Sierratrails.org/cc

Situations / Awareness: Destination Truckee / Tahoe



Next Steps



Next Steps

April/May 2024

- Agency input
- Alignment refinement
- Workshop promotion

June 2024

- Community workshops
- Ground truthing and data verification

Fall 2024

- Plan preparation





TOWNS TO TRAILS PLAN

alta

Eastern
Sierra
Council of
Governments

MLIPA
MAMMOTH LAKES TRAILS - PUBLIC ACCESS

www.townstotrails.org | info@townstotrails.org

Eastern Sierra Council of Governments

Elaine Kabala, Executive Director

ekabala@escog.ca.gov

(760) 878-8800



Mammoth Lakes Trails and Public Access Foundation

John Wentworth, CEO

johnwentworth@mltpa.org

(760) 934-3154

Alta Planning + Design

James Powell, PLA, Principal

jamespowell@altago.com

(213) 437-3336

Tim Bevins, Project Manager

timbevins@altago.com

(310) 430-0562

www.townstotrails.org | info@townstotrails.org