

Public Health

DEPARTMENT 847-860-862

DEPARTMENT MISSION STATEMENT

Our mission is to promote and protect a Mono County culture of health and safety in the community and environment through outreach, education, and prevention. Our core values include wellness, integrity, respect, caring, excellence in quality and service, personal and professional growth, collaboration, and flexibility.

DEPARTMENTAL OVERVIEW

Environmental and Public Health promote and protect the health of people and the communities where they live, learn, work and play. Through an upstream approach, Mono County Health Department strives to prevent people from getting sick or injured and promotes wellness by encouraging healthy behaviors. The 10 Essential Public Health Functions serve as a framework of how local, State and Federal mandates and core functions are upheld and implemented.

CHALLENGES, ISSUES and OPPORTUNITIES

As the fiscal year opened in 2020 the Covid-19 pandemic was surging, and the Public Health staff was completely immersed in the response. Moving into this fiscal year we have created a fulltime Covid -19 response team funded by the ELC grants. This team consists of a Deputy Director of Covid-19, an Infection Preventionist registered nurse, two contact tracing and investigation staff, and two Latino outreach specialists. This team with assistance of state and contracted resources will facilitate Mono County's Covid-19 response. Having the Covid-19 response team in place will enable Public Health staff to return to our core services for the general public. Public Health has added a Nurse Practitioner to our staff and will investigate providing expanded services for our most at risk members of our County. While regular Public Health staff will continue to assist in the Covid-19 response it will be limited to a as needed basis unless circumstances warrant a higher level of involvement. Public Health will strive to serve our community to the best of our ability.

CORE SERVICE AND PROGRAM DESCRIPTION

PUBLIC HEALTH (Fund 130)

Children's Medical Services (CMS): provides a comprehensive system of health care for children through preventive screening, diagnostic, treatment, rehabilitation, and follow-up services for targeted populations.
Communicable Disease Control: works to promptly identify, prevent and control infectious diseases that pose a threat to public health, including infectious diseases, vaccine-preventable agents, bacterial toxins, and pandemics.

HIV/AIDS/STD Programs: provides access to comprehensive prevention, diagnosis and treatment services for sexually transmitted diseases and HIV.T

Immunization Program: protects the population against vaccine-preventable diseases.

Maternal, Child, & Adolescent Health (MCAH): promotes healthy living, reproductive health, family planning, and access to prenatal care for mothers and their families.

Woman, Infant, and Child (WIC) Program: helps income eligible families by providing nutrition education, breastfeeding support, vouchers for healthy foods, and referrals to healthcare and other community services.

HEALTH EDUCATION (Fund 131)

Tobacco Education Program: Partners with agencies, organizations, communities, and individuals to collaboratively improve health for Mono County residents and visitors through health promotion outreach to high risk populations, training and technical assistance, tobacco cessation, youth health promotion and

risk prevention, health promotion through media, public health policy development and advocacy, and evaluation of outcomes.

BIO-TERRORISM (Fund 133)

Public Health Emergency Preparedness Program: Ensures a coordinated and effective response for the medical and health planning efforts during an emergency or disaster that impacts the health of our community. Works with local stakeholders, including healthcare providers and facilities, community-based organizations, law enforcement, fire personnel, emergency medical services, schools, volunteers, town and county governments, and many other entities.

PUBLIC HEALTH (FUND 137)

Environmental Health: Promotes public health and facilitates disease prevention through oversight and guidance in the areas of water quality control, food safety, solid and liquid waste management, air quality control, hazardous materials and waste management, substandard housing mitigation, recreational swimming facilities and vector-borne disease surveillance.

DEPARTMENTAL ACTION PLAN FOR 2020-2021

Covid-19 Response

County Strategic Focus Area: 1A – Improve emergency operations and response

Primary focus of Public Health Operations for 2021-22. Since the beginning of the global pandemic in March, Public Health has been completely immersed in the containment of COVID-19 and participating in the Mono County Emergency Operations Center. Serving our community in all areas such as epidemiology, contact tracing and quarantine, 211 Nurse Hotline, extensive community testing and vaccination of the county, 100% of staff has participated either fully or as needed. Fiscal Year 21-22 appears to be an improving battle with hope of controlling community spread, hospitalizations and deaths, as well as the economic collapse of our region. Meanwhile, day to day public health programs continue to need attention and support, particularly those that serve the public. Flu clinics and Covid-19 vaccination clinics will continue to be important this year.

Target completion: unknown

Review & Implement EH Fee Study

County Strategic Focus Area: 3D – Adopt, implement, and monitor fiscal resiliency principles

Complete a fee assessment to collect appropriate level of fees for services provided.

Target completion: TBD

Naloxone Training and Distribution

County Strategic Focus Area: 1B – Address opioid crisis and substance abuse

Continue training and distribution of Naloxone through partnering agencies to community members to reduce the incidence of overdose and death related to opioid use.

Target completion: ongoing through 21-22

County-wide Syringe Exchange Program

County Strategic Focus Area: 1B – Address opioid crisis and substance abuse

In conjunction with Behavioral Health, apply for, develop, and implement a county-wide syringe exchange program to reduce the transmission of blood borne pathogens and link clients to harm reduction services for substance use treatment and prevention.

Target completion: by 21-22 fiscal year end

Annual Health Department Update

County Strategic Focus Area: 4B – Improve operational efficiency and increase customer service and transparency. Develop and distribute an Annual Health Department Update with 21-22 highlights to increase public awareness and transparency regarding services and work.

Target completion: To be presented during Public Health Week (1st week of April 2022)

Public Health

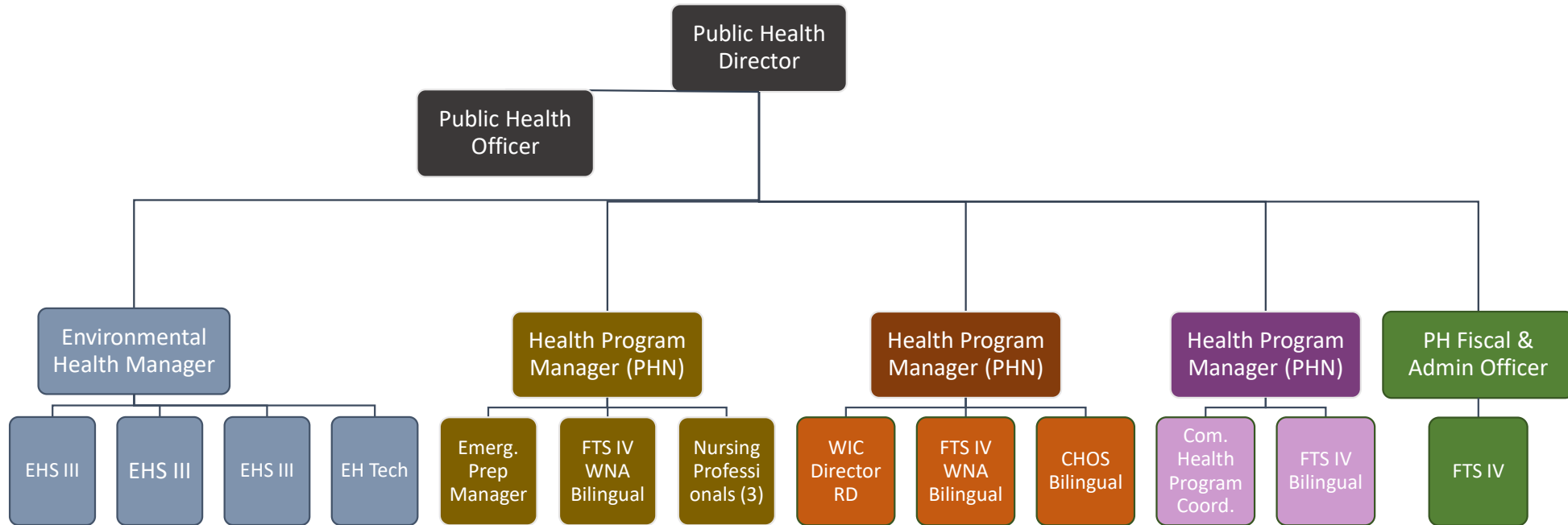
10 Essential Public Health Services

		Mandated?				Mandated?	
1	Monitor Health	Conduct community health needs assessments	Y	2	Diagnose & Investigate	Provide access to Public Health Labs	Y
		Determine health service needs and gaps in care	Y			Infectious disease surveillance, investigation, and response to outbreaks	Y
		Identify social and environmental threats to the health of the community	Y			Plan for and respond to public health emergencies	Y
		Identify community assets and resources	Y			Investigate foodborne outbreaks	Y
3	Inform, Educate, Empower	Provide health promotion activities including flu clinics and smoking cessation support.	Y	4	Mobilize Community Partnerships	Build coalitions to bring together resources from the whole community	Y
		Collaborate on health education efforts with schools and local agencies	Y			Health improvement planning efforts, programs, and projects	Y
		Send MonoGrams to inform the community about seasonal and ongoing public health issues	Y			Convene partners to develop a community health improvement plan	Y
		Provide accessible, bilingual, health information and resources via multiple media outlets	Y			Develop MOUs with other organizations to improve continuity of care	Y
5	Develop Policies	Develop and track measurable objectives	Y	6	Enforce Laws	Enforce sanitation codes	Y
		Foster leadership at all levels	Y			Protect drinking water supplies	Y
		Develop policies and ordinances to improve public health	Y			Conduct timely inspections and response to complaints	Y
		Advocate for legislation that supports public health and funding	Y			Follow up on hazardous environmental exposures	Y
7	Link to Services	Provide outreach and education for special populations	Y	8	Assure Competent Workforce	Provide education, training, and evaluation	Y
		Provide culturally appropriate communication and materials	Y			Provide monetary support and efficient procedures for license renewal	Y
		Refer and provide warm-hand offs to health & human services	Y			Provide public health nursing internships and training programs	Y
		Distribute mass quantities of antibiotics or vaccines in the event of an outbreak or bioterrorism related attack	Y			Test emergency response plan during a mock event to evaluate performance.	Y
9	Evaluate	Evaluate effectiveness of public health programs and services	Y	10	Research	Utilize best practices to guide work	Y
		Allocate resources and reshape programs or organizational structure	Y			Link with institutions of higher learning	Y
		Monitor trends in disease rates to assess effectiveness of disease prevention activities	Y			Monitor rapidly changing disease prevention and health promotion research	Y
		Monitor trends in risk behaviors to assess effectiveness of health promotion activities	Y			Revise practices in order to remain current with recommended practices resulting from evidence based work	Y



PUBLIC HEALTH

Departmental Organizational Chart

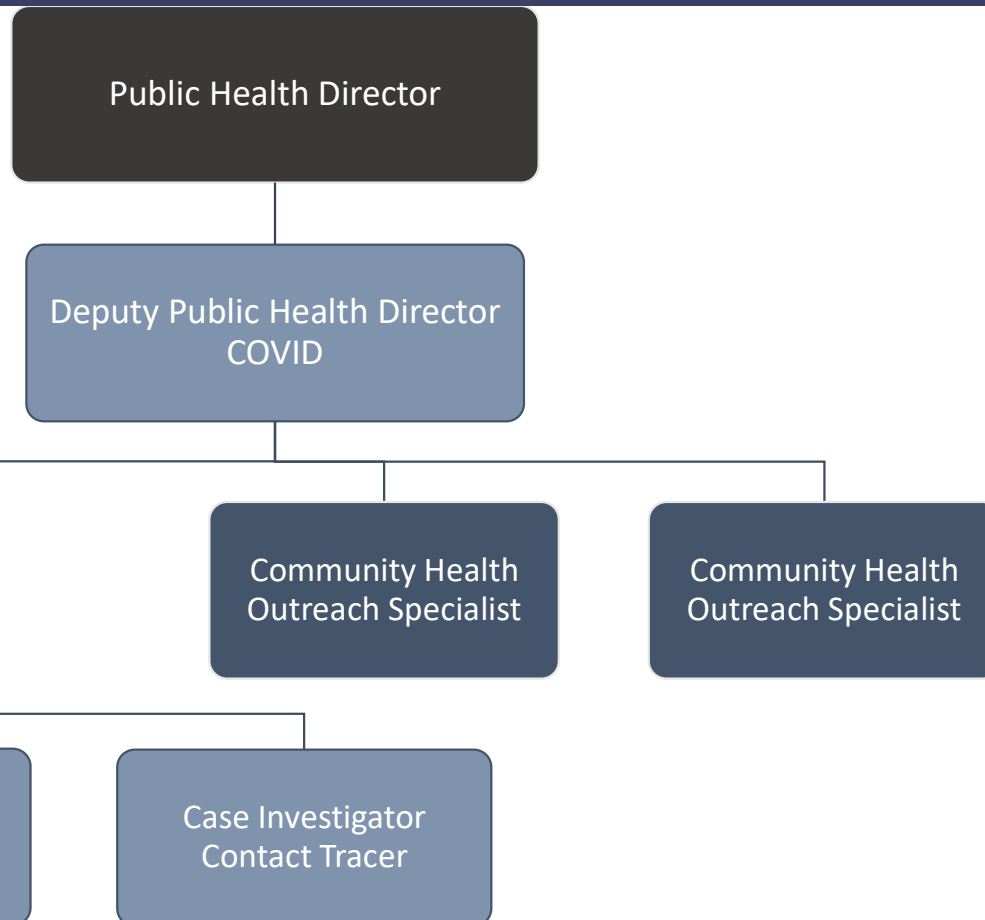


DIVISIONS	ENVIRONMENTAL HEALTH	EMERGENCY PREP & DISEASE PREVENTION	INDIVIDUAL & FAMILY SERVICES	COMMUNITY WELLNESS	FINANCE
-----------	----------------------	-------------------------------------	------------------------------	--------------------	---------



Public Health

Departmental Organizational Chart

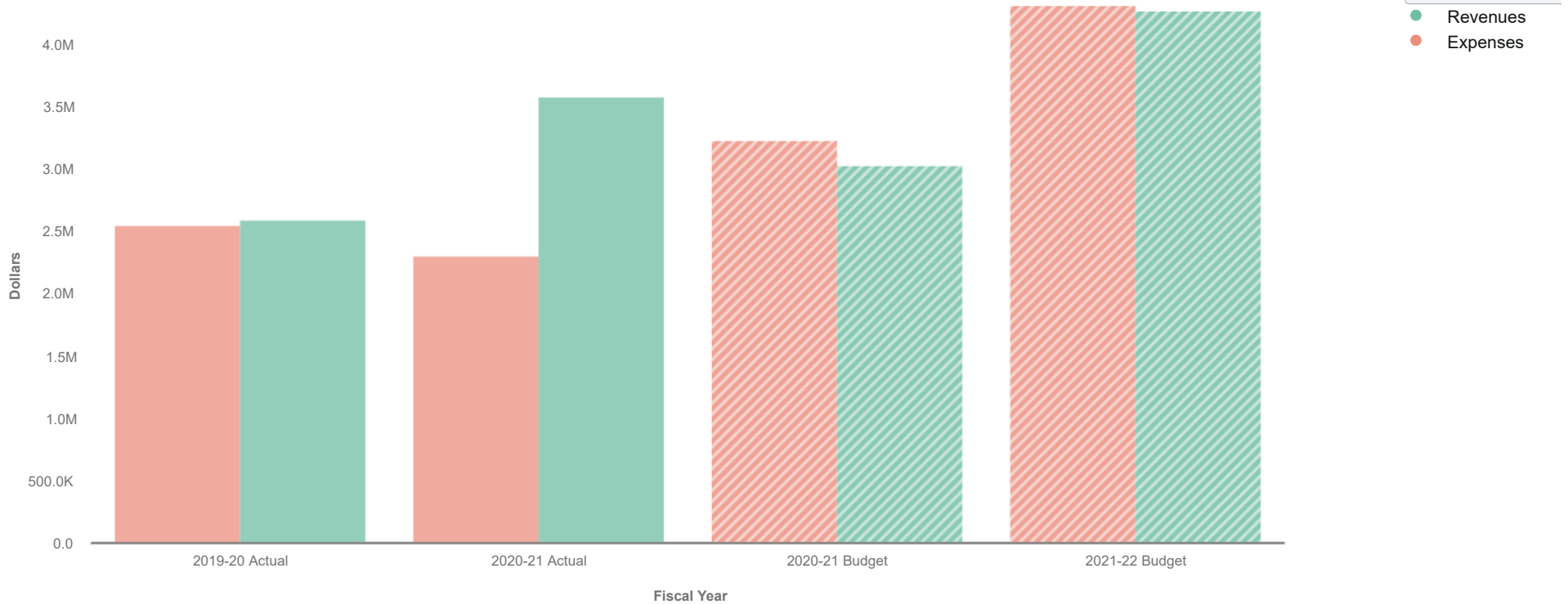


0. 2021-22 Recommended Budget

PUBLIC HEALTH 130-41-860



Visualization



Collapse All	2019-20 Actual	2020-21 Actual	2020-21 Budget	2021-22 Budget
▼ Revenues	\$ 2,599,684	\$ 3,586,130	\$ 3,036,606	\$ 4,277,019
▶ Intergovernmental	2,097,896	2,662,844	2,690,905	3,983,291
▶ Charges for Services	170,058	912,168	202,189	158,434
▶ Licenses, Permits & Franchises	298,721	227	0	0
▶ Miscellaneous Revenues	1,016	586	108,342	108,342
▶ Transfers In	17,023	0	27,670	19,452
▶ Interest & Rents	13,818	9,989	7,000	7,000
▶ Fines, Forfeitures & Penalties	1,152	316	500	500
▼ Expenses	2,558,099	2,307,431	3,233,220	4,313,536
▶ Salaries & Benefits	1,636,531	1,517,057	1,687,564	2,301,037
▶ Services and Supplies	836,571	783,609	753,919	1,064,615

Collapse All	2019-20 Actual	2020-21 Actual	2020-21 Budget	2021-22 Budget
▶ Transfers Out	84,998	0	791,737	832,884
▶ Capital Outlay	0	6,764	0	115,000
Revenues Less Expenses	\$ 41,584	\$ 1,278,699	\$ -196,614	\$ -36,517

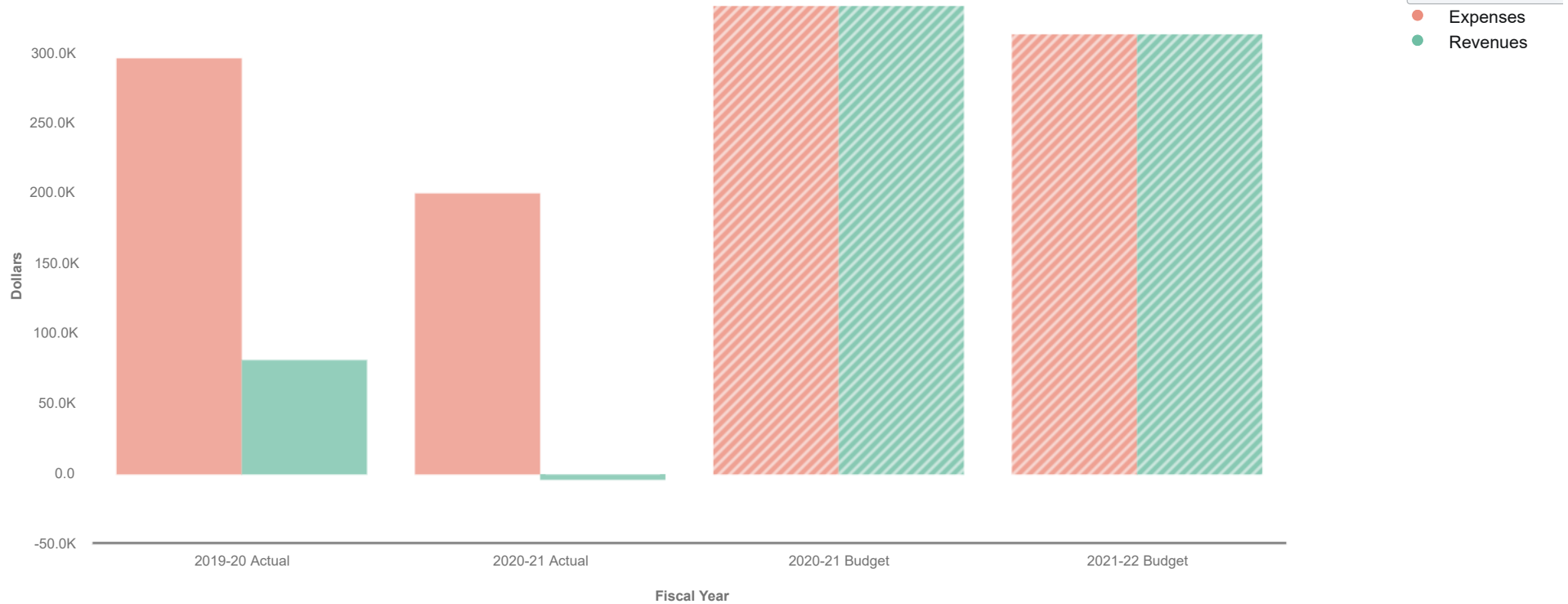
Data filtered by Types, PUBLIC HEALTH, HEALTH&SANITATION-HEALTH, PUBLIC HEALTH, No Project and exported on June 2, 2021. Created with OpenGov

0. 2021-22 Recommended Budget

2. Public Health Education 131-41-847



Visualization



Collapse All	2019-20 Actual	2020-21 Actual	2020-21 Budget	2021-22 Budget
▼ Revenues	\$ 81,105	\$ -4,054	\$ 333,347	\$ 313,829
▶ Transfers In	40,239	0	333,347	313,829
▶ Intergovernmental	44,855	0	0	0
▶ Interest & Rents	-3,989	-4,054	0	0
▼ Expenses	296,622	200,750	333,347	313,829
▶ Salaries & Benefits	179,350	108,486	229,230	169,687
▶ Services and Supplies	117,272	92,264	104,117	144,142
Revenues Less Expenses	\$ -215,517	\$ -204,805	\$ 0	\$ 0

0. 2021-22 Recommended Budget

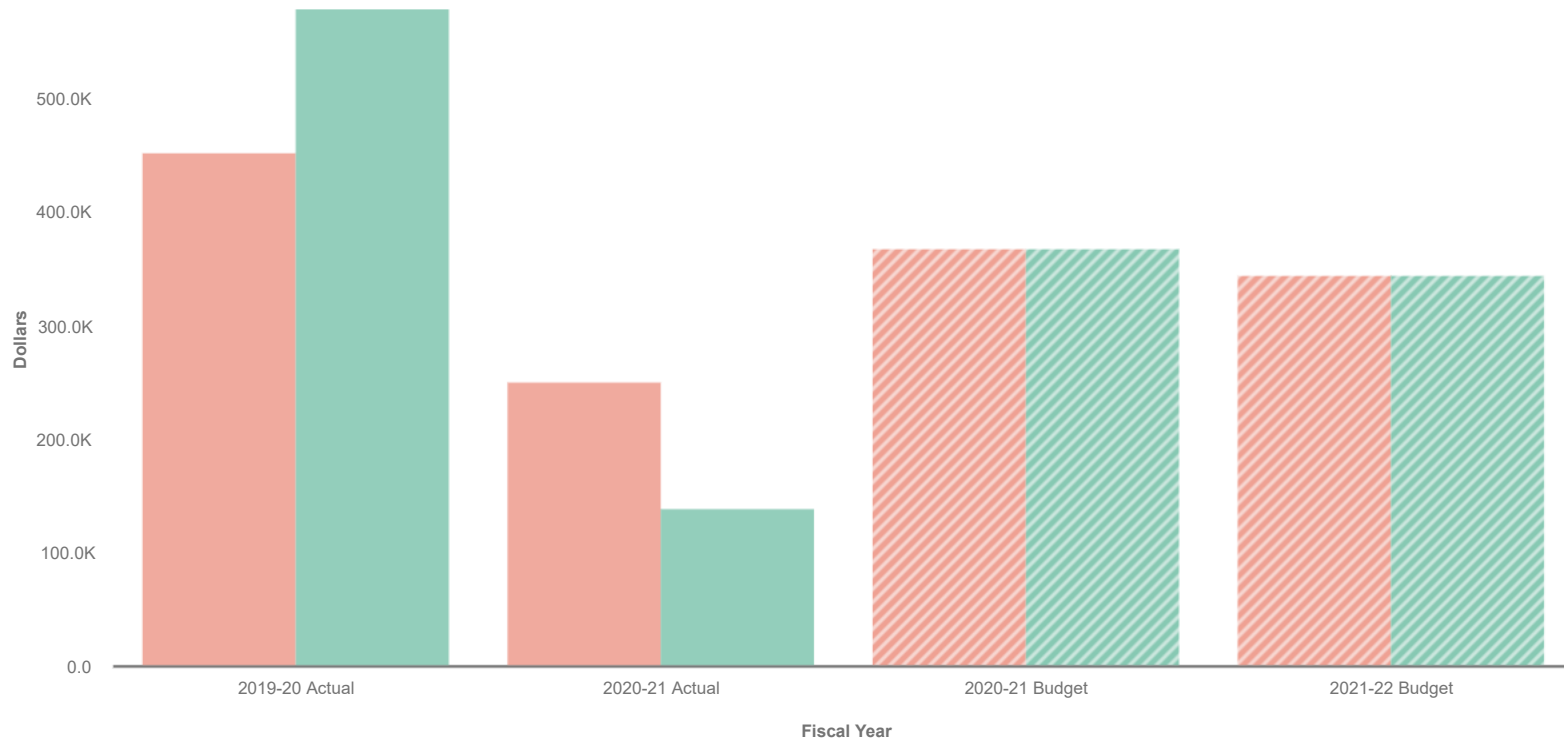
3. Bio-Terrorism 133-41-860



Visualization

Sort **Large to Small**

- Revenues
- Expenses



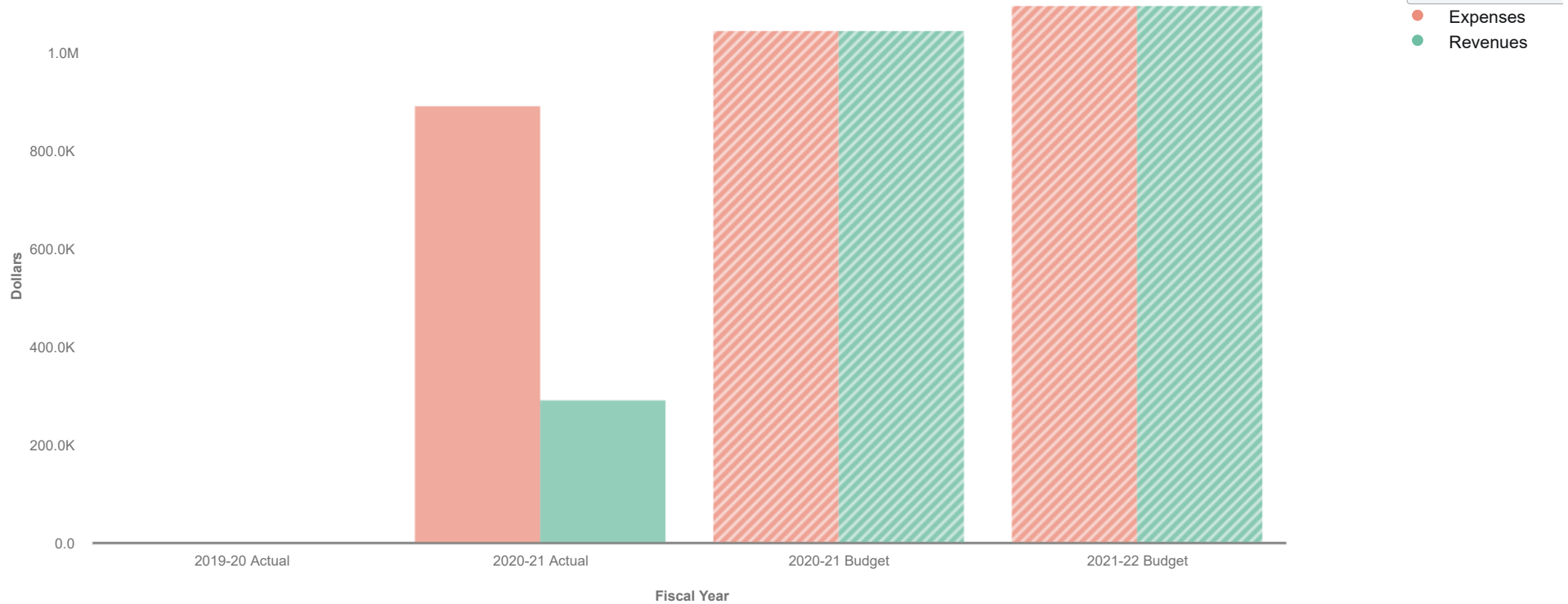
Expand All	2019-20 Actual	2020-21 Actual	2020-21 Budget	2021-22 Budget
▼ Revenues	\$ 579,010	\$ 140,109	\$ 368,931	\$ 345,042
▶ Intergovernmental	538,254	141,172	327,393	298,921
▶ Transfers In	44,759	0	41,538	46,121
▶ Interest & Rents	-4,003	-1,063	0	0
▼ Expenses	453,159	251,080	368,931	345,042
▶ Salaries & Benefits	374,466	176,386	241,696	216,476
▶ Services and Supplies	78,693	74,694	127,235	128,566
Revenues Less Expenses	\$ 125,851	\$ -110,971	\$ 0	\$ 0

0. 2021-22 Recommended Budget

4. Environmental Health 137-41-862



Visualization



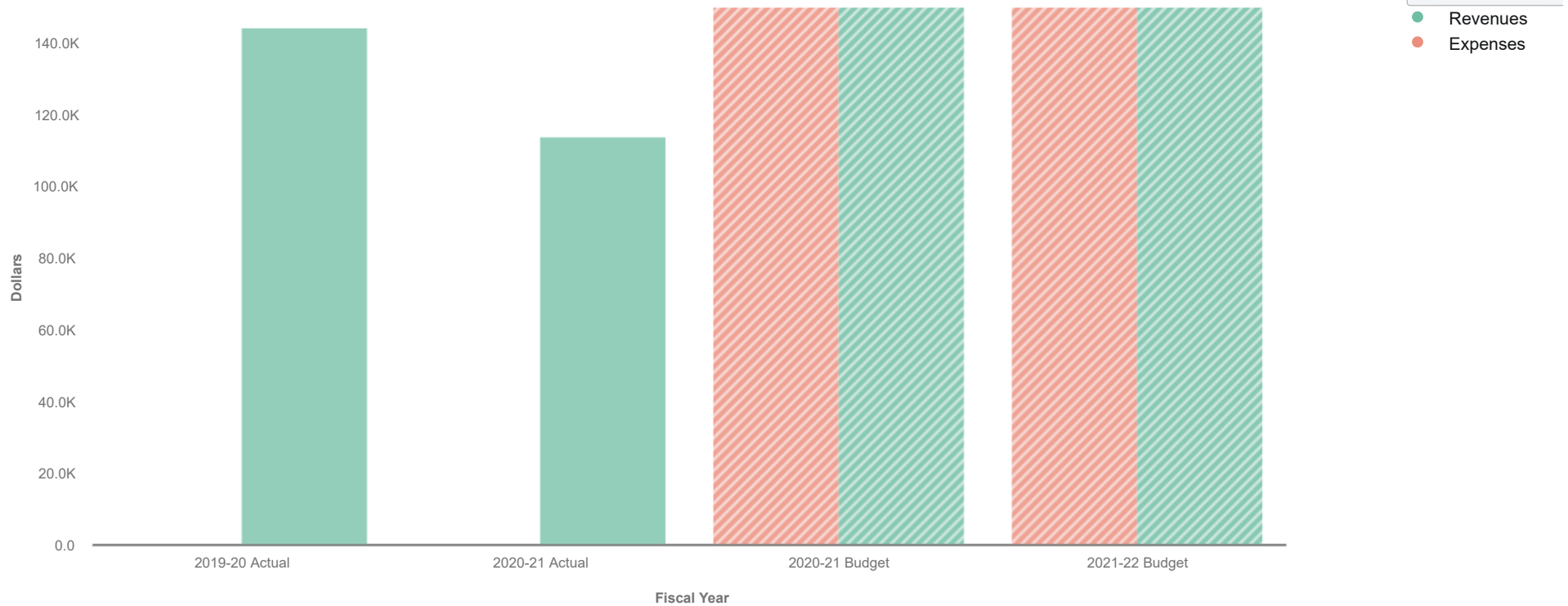
Collapse All	2019-20 Actual	2020-21 Actual	2020-21 Budget	2021-22 Budget
▼ Revenues	\$ 0	\$ 291,926	\$ 1,045,555	\$ 1,094,374
▶ Transfers In	0	0	716,752	763,360
▶ Licenses, Permits & Franchises	0	276,153	263,003	266,821
▶ Charges for Services	0	0	49,300	47,693
▶ Intergovernmental	0	16,500	16,500	16,500
▶ Interest & Rents	0	-727	0	0
▼ Expenses	0	892,368	1,045,555	1,094,374
▶ Salaries & Benefits	0	571,336	654,930	726,638
▶ Services and Supplies	0	321,032	390,625	367,736
Revenues Less Expenses	\$ 0	\$ -600,442	\$ 0	\$ 0

0. 2021-22 Recommended Budget

5. Prop 99 Public Health 135-41-847



Visualization



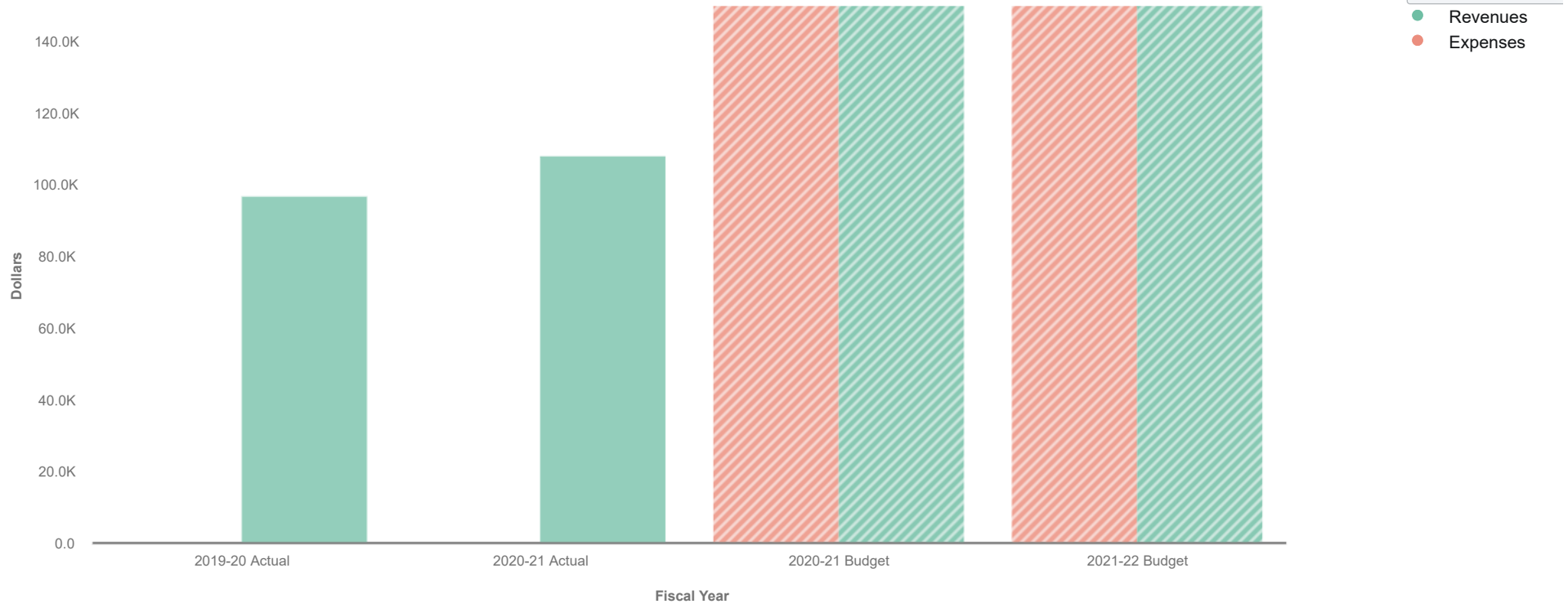
Collapse All	2019-20 Actual	2020-21 Actual	2020-21 Budget	2021-22 Budget
▼ Revenues	\$ 144,435	\$ 114,041	\$ 150,000	\$ 150,000
▶ Intergovernmental	143,248	112,500	150,000	150,000
▶ Interest & Rents	1,187	1,541	0	0
▼ Expenses	0	0	150,000	150,000
▶ Transfers Out	0	0	150,000	150,000
Revenues Less Expenses	\$ 144,435	\$ 114,041	\$ 0	\$ 0

0. 2021-22 Recommended Budget

6. Prop 56 Health Education 136-41-847



Visualization



Collapse All	2019-20 Actual	2020-21 Actual	2020-21 Budget	2021-22 Budget
▼ Revenues	\$ 96,936	\$ 108,257	\$ 150,000	\$ 150,000
▶ Intergovernmental	95,445	106,812	150,000	150,000
▶ Interest & Rents	1,491	1,445	0	0
▼ Expenses	0	0	150,000	150,000
▶ Transfers Out	0	0	150,000	150,000
Revenues Less Expenses	\$ 96,936	\$ 108,257	\$ 0	\$ 0