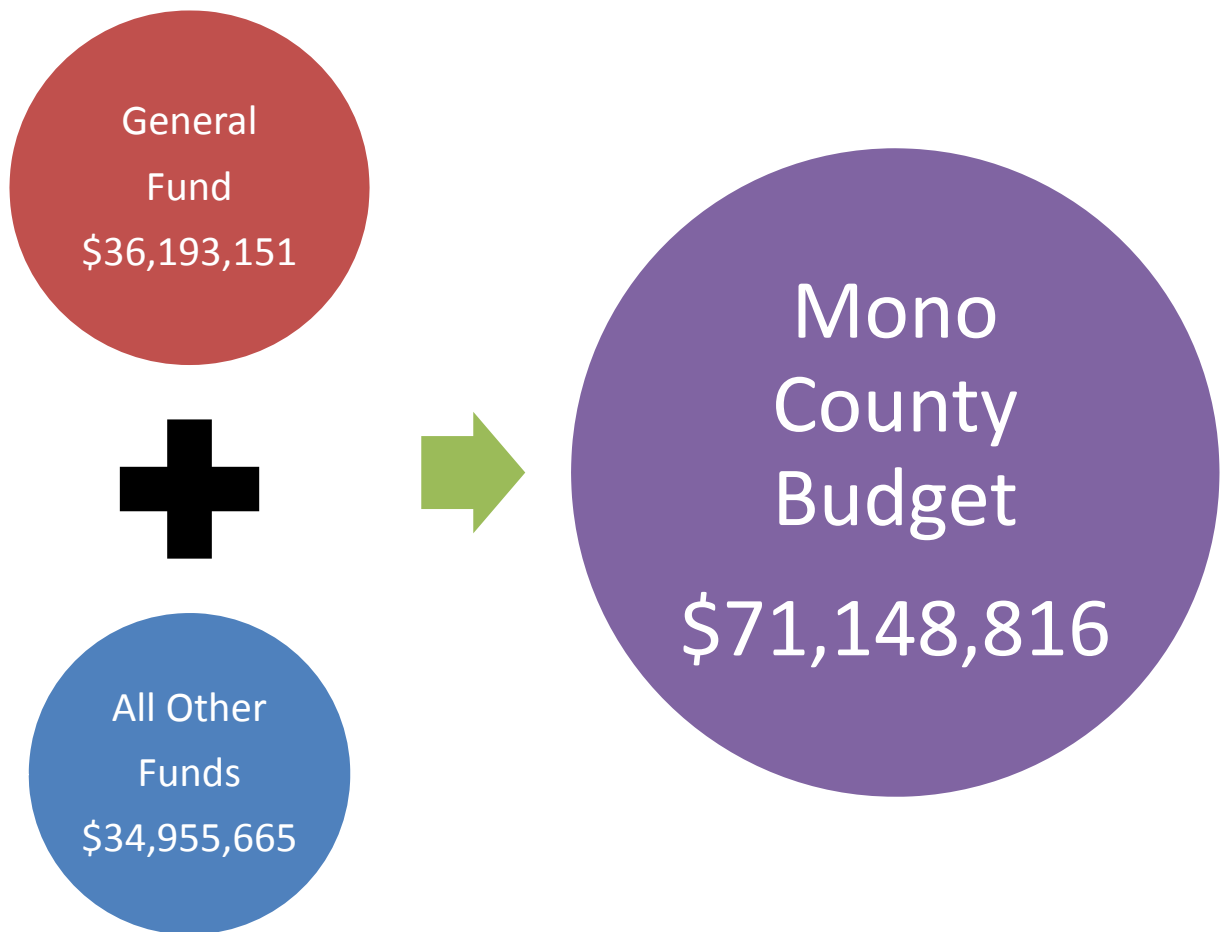


MONO COUNTY BUDGET

The Mono County Budget is comprised of two main types of funds: The General Fund and Special Purpose Funds such as Roads, Health and Social Services, and Solid Waste, among others. Last year, the funds were divided like this:



Other funds generally have dedicated funding sources that can ONLY be spent on those specific programs. The General Fund, on the other hand is where local priorities can drive some spending decisions, but not all of them -

GENERAL FUND

We start with the whole General Fund Budget.....

Total Budget \$36,193,151



Subtract the Restricted funds.....

*State, Federal and Other
Governmental Funding
\$11,816,484*

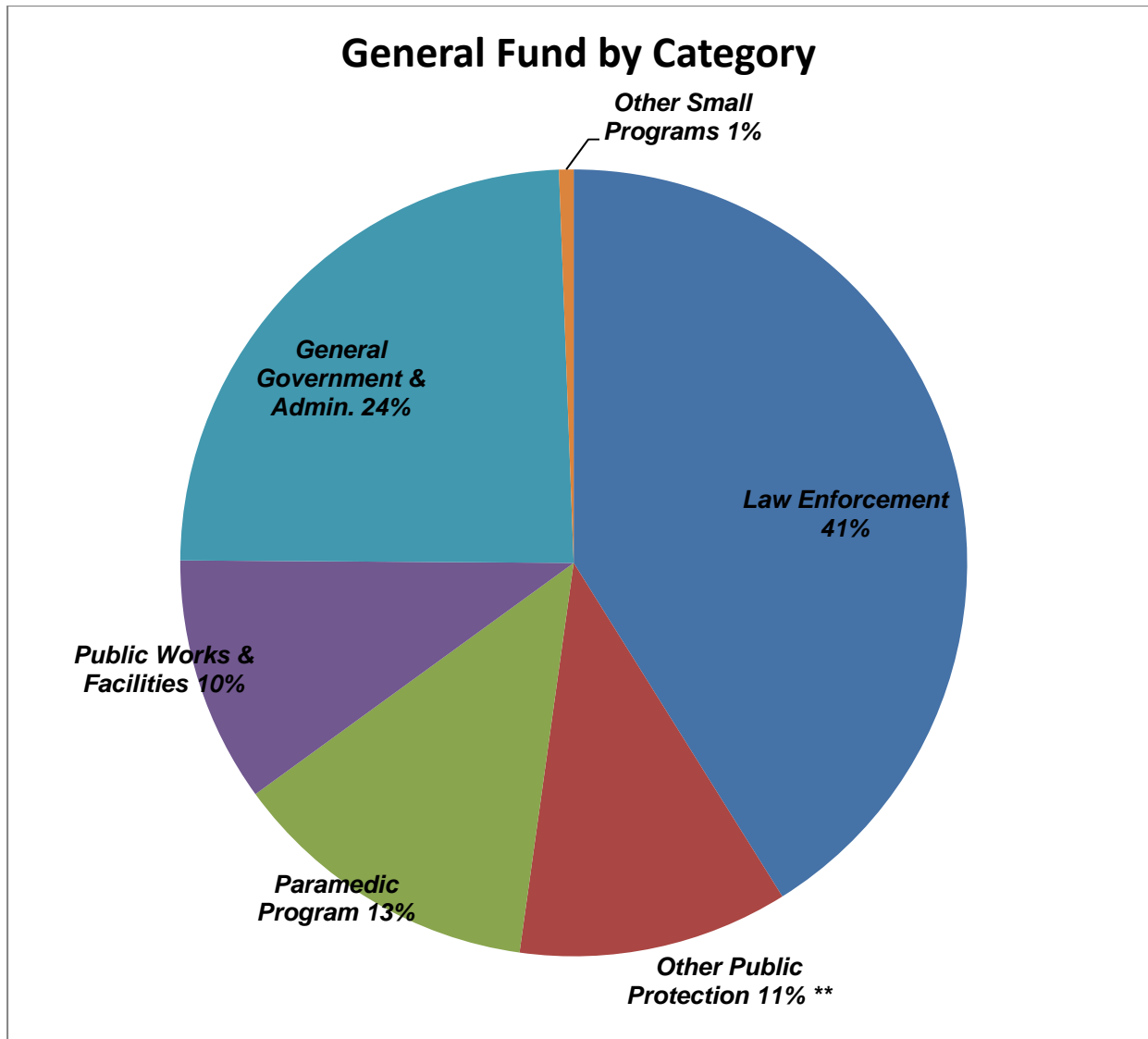


Now we have discretionary funds left – let's get to work!

*Taxes, Licenses & Permits,
Fines & Penalties, Charges For
Services, Interest
\$24,376,667*

FUNCTIONAL ALLOCATION

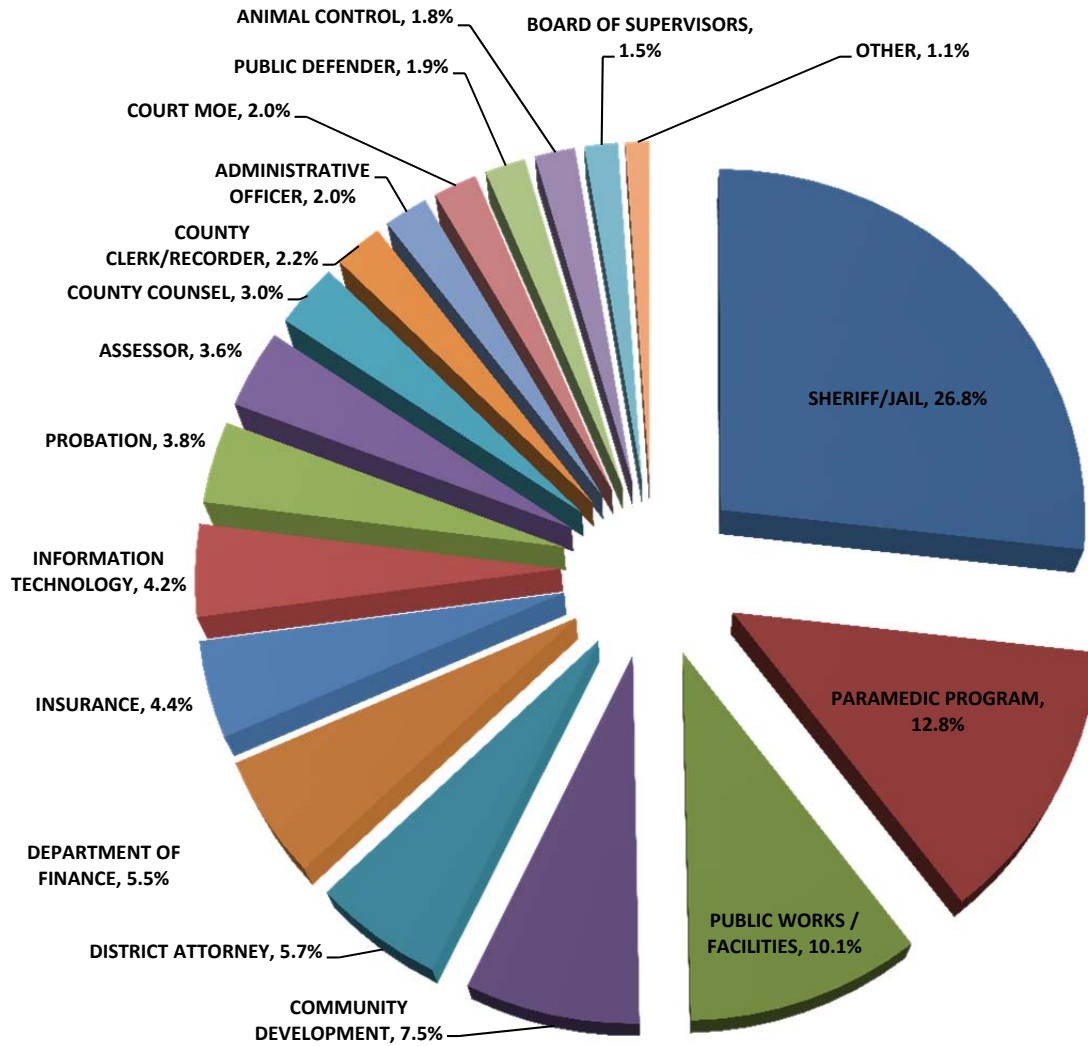
The general fund budget is divided up into categories.



****Other Public Protection Includes the County Clerk-Recorder/Elections, Community Development, Animal Control and Weights & Measures.**

DEPARTMENTAL ALLOCATION

And departments like this:



DEPARTMENT DESCRIPTIONS

Agriculture Commissioner – Weights and Measures: This division promotes the agricultural industry, protects the environment and is responsible for monitoring the marketplace through its Weights and Measures program.

Animal Control: This is a public health and safety enforcement agency dedicated to protecting people from animals, and, animals from people. The Animal Shelter provides care for sick, injured and abandoned animals and administers the pet adoption program.

Assessor: The Assessor is responsible for the assessment of all taxable property in the county.

Behavioral Health: This division provides a broad range of community services to meet the behavioral health needs of County residents including alcohol and drug addiction programs.

Board of Supervisors: The Board of Supervisors provides overall direction to the County, and establishes policies for the operation of County government.

Clerk-Recorder-Registrar: The Clerk-Recorder-Registrar maintains official documents, birth/death certificates, marriage certificates, fictitious business names, elections, voter registration and absentee voting and acts as the Clerk of the Board of Supervisors.

Community Development: This department consists of Planning, Building and Code Compliance and provides a variety of development and enforcement services for the unincorporated areas of the county.

County Administrative Office: This office assists the Board of Supervisors in managing, directing, and coordinating the operation of all county departments.

County Counsel: This office provides legal representation and advice to the Board of Supervisors and other County entities and defends/pursues legal actions against/for the County.

District Attorney: The District Attorney serves as the public prosecutor for all criminal offenses in the county.

Economic Development: This department provides services to promote tourism and encourage the startup, retention and expansion of businesses and jobs.

Finance Department: This department provides accounting services, receipt and disbursement of County funds, budgeting, payroll, collection and distribution of property tax and other revenue, and invests public funds.

Human Resources – Risk Management: Human Resources provides a wide variety of services including recruitment, testing, job classification, position allocation, training, and risk management.

Information Technology: This department provides computer, telephone and other technology services to other County departments.

Paramedic Emergency Medical Services: This program is responsible for emergency medical calls, inter-facility ambulance transports and disaster planning and response.

Probation: This department protects the public by supervising adult and juvenile probationers, including GIS monitoring and administering programs, working closely with the courts, district attorney and sheriff.

Public Health Services – Environmental Health: This division provides food, recreational health, waste, water quality, health nuisance abatement programs and responds to public health emergencies.

Public Works – Facilities: This division operates and maintains parks & recreation areas, cemeteries, county airports, and county buildings.

Public Works – Roads: This division is responsible for road maintenance and repair, snow removal and engineering.

Public Works – Solid Waste: This division is responsible for waste management, operation of County landfills, transfer stations and recycling programs.

Sheriff – Coroner: The Sheriff's department is responsible for the delivery of law enforcement and related emergency services throughout the county, operates the county jail, and provides coroner services.

Social Services: Provides a wide variety of services to seniors, adults and children including in-home support, Adult Protective Services, , Medi-Cal, county medical services, general assistance, CalFresh, Child Protective Services, Employment and Training, CalWorks, emergency shelters and foster care.

GENERAL INFORMATION

Many times, the dedicated funding is not sufficient to pay for important programs and services, so the General Fund will subsidize them with discretionary money. For example, during heavy winters, the Road Fund may need additional funds to keep the roads plowed. Last year, the County budget included subsidies for the following programs:

- Road Fund - \$550,000
- Behavioral Health (required County match) - \$7,419
- Fire Districts (six smallest districts) - \$20,254
- Solid Waste subsidy - \$294,225 (\$69,225 actually transferred)
- Social Services (subsidy and required county match) - \$534,967
- Terrorism & Bioterrorism grant subsidies – \$113,340

The County also provided funding to increase tourism and increase the quality of life for Mono County residents by using general funds for:

- Fish enhancement programs - \$123,000
 - Contribution to support air service - \$85,000
 - Contribution to support June Lake advertising \$100,000
 - Contributions to other community agencies and programs - \$75,000
-

Did you know?

- Mono County has land area of 3,030 square miles – over 2 million acres,
- 94% of the property is publicly owned – only 6% is privately owned,
- There are 14,308 residents, and
- The County currently employs 285.1 FTEs