

Mono County Community Development Department Planning Division

PO Box 347
Mammoth Lakes, CA 93546
760-924-1800, fax 924-1801
commdev@mono.ca.gov

PO Box 8
Bridgeport, CA 93517
760-932-5420, fax 932-5431
www.monocounty.ca.gov

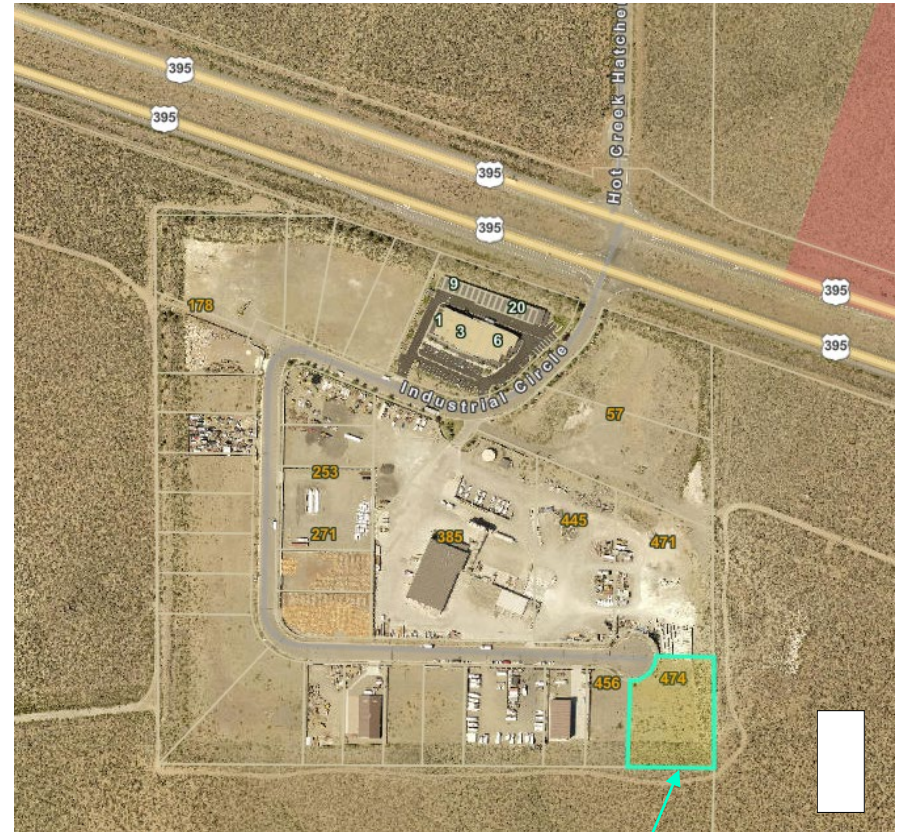
NOTICE OF PUBLIC HEARING

NOTICE IS HEREBY GIVEN that the Mono County Planning Commission will conduct a public hearing on **April 20, 2023**, at the Mono Lake Room of the Mono County Civic Center, First floor, 1290 Tavern Road Mammoth Lakes, CA, or remotely via Zoom. <https://monocounty.zoom.us/j/84692262742>
Webinar ID: 846 9226 2742

Members of the public shall have the right to observe and offer public comment to consider the following: **9:30 a.m. CONDITIONAL USE PERMIT MODIFICATION 23-004/Bask Ventures, Inc.:** Proposal for reduced building size and redesign of parking and snow storage for a previously approved indoor cultivation of cannabis (Use Permit 18-014) on an Industrial (I) parcel located at 474 Industrial Circle, in the Sierra Business Park across from Mammoth Yosemite Airport (APN 037-260-004). Cultivation will occur in a 14,388-square foot indoor facility designed to incorporate up to 4,600 square feet of flowering canopy. A CEQA 15183 exemption is proposed. Project files are available for public review at the Community Development Department offices in Bridgeport and Mammoth Lakes.

INTERESTED PERSONS are encouraged to attend the livecast meeting online (technology permitting) or to attend in-person; and to **submit comments by 8 am on Thursday, April 20, 2023**, to the Planning Commission Secretary, PO Box 347, Mammoth Lakes, CA 93546 or by email at cddcomments@mono.ca.gov. If you challenge the proposed action(s) in court, you may be limited to raising only those issues you or someone else raised at the public hearing described in this notice, or in written correspondence delivered to Secretary to the Planning Commission at, or prior to, the public hearing.

Mono County Planning Division
April Sall, Planning Analyst
PO Box 347
Mammoth Lakes, CA 93546
asall@mono.ca.gov 760-932-5423



Project location highlighted in blue.
474 Industrial Circle (APN 037-260-004)

Mono County Community Development Dept.
PO Box 347
Mammoth Lakes, CA 93546

«AssesseeName»
«Mailing_St»
«Mailing_City», «Mailing_State» «Mailing_Zip»