



EASTERN SIERRA
WINTER RECREATION MAP
Mono-Mammoth Ranger District, Inyo National Forest



MAMMOTH LAKES,
JUNE LAKE &
LEE VINING AREAS



SNOWMOBILES & OVER SNOW VEHICLES (OSV)

Miles of snow-covered roads and play areas are open to snowmobilers and over snow vehicles (OSV) in the Mammoth, June, and Mono Lake areas. A variety of terrain, from wide-open meadows, forested areas and the groomed OSV network provide opportunities for all skill levels. Trails that are specifically designated for snowmobiling are marked with orange diamonds and groomed by Inyo National Forest and commercial guide service providers. In addition to the groomed OSV trail network, there are approximately 150,000 acres open to over snow vehicles equipped and prepared to travel off the maintained trail system.

CLOSED & RESTRICTED AREAS
All closed areas are indicated on the maps

AREAS CLOSED OR RESTRICTED TO MOTORIZED USERS ARE AS FOLLOWS:

- Mono Basin National Forest Scenic Area State Lands.
- Devils Postpile National Monument, Wilderness, and Research Natural Areas.
- Mammoth Mountain and June Mountain Ski Areas.
- All Blue diamond non-motorized trails including Obsidian Dome, Deadman Summit and Shady Rest Winter Trails.
- The Mammoth Lakes Basin is closed to motorized use and bikes until April 17th of each year. After April 17th, the Lakes Basin is open to all users.
- Active timber sales and logging roads.
- Groomed winter trails are closed to all wheeled vehicles (except winter fat bikes).

RECOMMENDED STAGING AREAS

- SHADY REST PARK**
 - Located in Mammoth Lakes off Sawmill Cutoff Road.
 - Starting point for A Trail, B Trail and K Trail.
- CINDER SHED**
 - Located on the north side of HWY 203, 1.5 miles west of the Mammoth Scenic Loop/HWY 203 junction.
 - Provides access to the C Trail and F Trail.
 - The F Trail corridor is a slow zone (15 mph limit).
- DEADMAN SUMMIT**
 - Located at the intersection of HWY 395 and Bald Mountain Road.
 - Provides access to the I Trail, D Trail and G Trail.
- LOOKOUT MOUNTAIN**
 - Located at the intersection of HWY 395 and the Mammoth Scenic Loop, east side.
 - Provides access to the A Trail, L Trail and G Trail.
- JUNE LAKE JUNCTION**
 - Located at the intersection of HWY 395 and HWY 158.
 - Provides access to the I Trail and G Trail.

ADDITIONAL RESOURCES
www.mammothtrails.org/activity/50/snowmobiling/
www.monocounty.org/things-to-do/by-snow/snowmobiling/
www.visitmammoth.com/snowmobiling/

NON-MOTORIZED ACTIVITIES

Recreating in the Eastern Sierra is an experience of unparalleled scenery, serenity, fitness and fun for beginners to experts, thanks to the varied terrain and unrivaled backdrop of the Sierra Nevada landscape. There are over 30 miles of groomed non-motorized winter trails in and around Mammoth Lakes, providing opportunities to explore the Inyo National Forest on skis, snowshoes, and winter fat bikes. There is a wide variety of terrain for every ability level.

The Mammoth Lakes Blue Diamond Nordic Routes offer 7 miles of un-groomed opportunities marked with blue diamonds attached to trees along the way. These ski and snowshoe routes were established by the U.S. Forest Service in the early 1980s and have been maintained by the Range of Light Group, Sierra Club, in partnership with the U.S. Forest Service.

MAMMOTH LAKES BLUE DIAMOND NORDIC ROUTES MAP
www.mltpa.org/images/downloads/MammothLakesBlueDiamondNordicRoutesMap.pdf

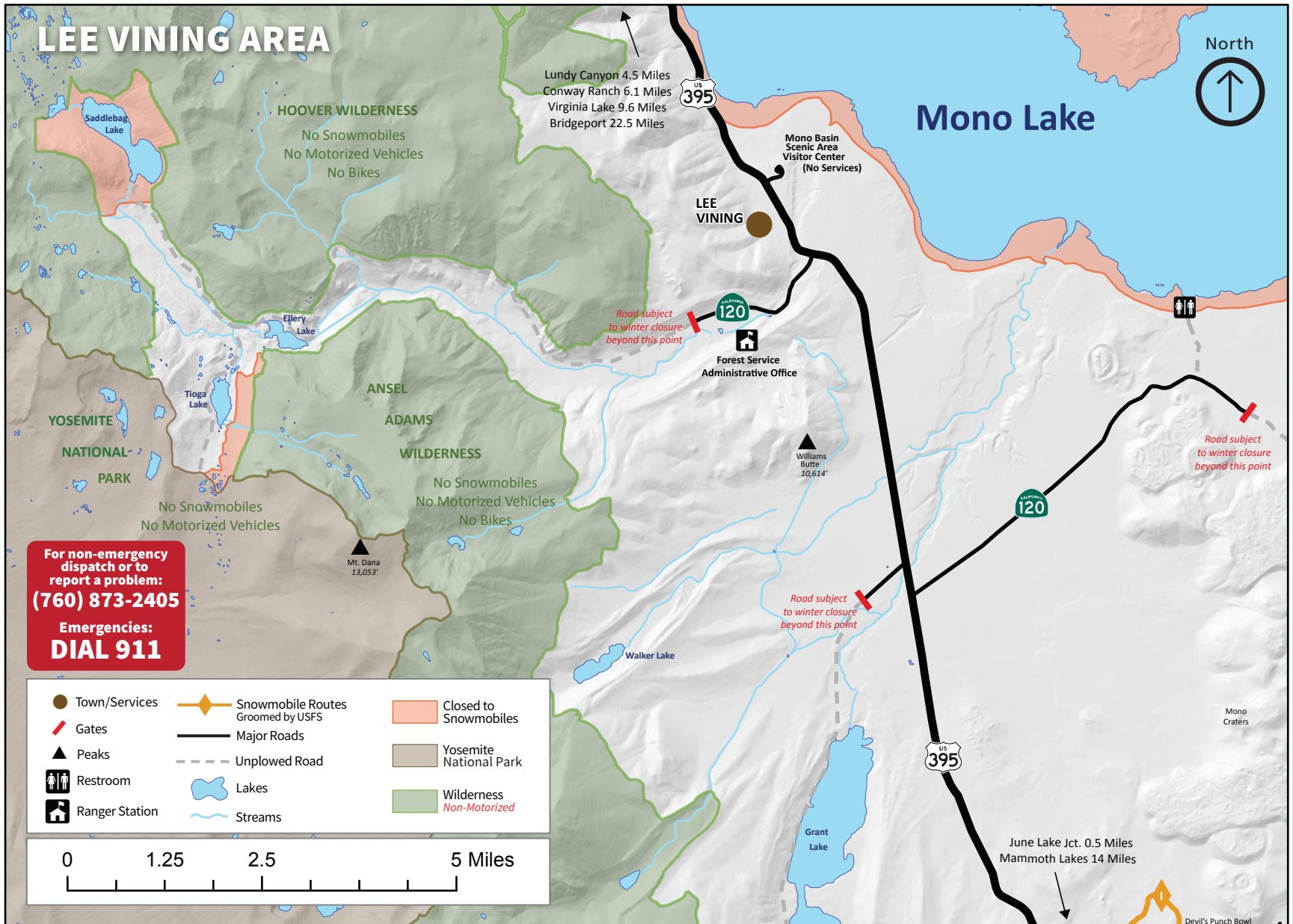
ADDITIONAL RESOURCES
www.mammothtrails.org/activity/40/cross-country-skiing/
www.mammothmountain.com/winter-activities/cross-country-skiing
www.visitmammoth.com/adventures/
www.fs.usda.gov/recarea/inyo/recarea/?recid=81528

TRAIL ETIQUETTE & SAFETY
PLEASE ENJOY THIS MULTI-USE TRAIL SYSTEM RESPONSIBLY

The National Forests are the lands of many uses - and many users. People traveling by skis, snowshoes, winter fat bikes and snowmobiles will share the same routes and areas.

- Respect other trail users. Be courteous and yield right of way. **All users yield to grooming machines.**
- All multi-use trails are two-way traffic.
- Always stay on the right-hand side of the trail. Pass on the left.
- **Beware of blind turns!** Slow down for oncoming traffic. Speed limit in slow zone areas is 15 mph.
- Please avoid all roads or areas posted with closures or restrictions, or as shown as closed on map.
- **Keep dogs leashed at all times. Pick up and dispose of all dog waste on and off trails. Littering is prohibited by law.**
- Winter travel in the backcountry requires proper gear and appropriate clothing. Be self-sufficient!
- Use extreme caution when recreating at night. Be visible and use the brightest lights you can find.
- Winter Fat Bikes (3.8" wide tires or wider with low tire pressure) are allowed on all groomed trails outside of ski areas.
- If winter fat biking leaves a rut deeper than 2 inches and/or you can't ride in a straight line... it's too soft to ride!
- **EBIKES ARE NOT ALLOWED:** On any non-motorized trails or Nordic Recreation Areas (Shady Rest, Obsidian Dome, Tamarack).
- Crossing two-lane plowed roads at right angles is permitted.
- Crossing four-lane plowed roads is prohibited unless otherwise posted.
- All snowmobiles must display a current state registration sticker to operate on National Forest Lands.
www.dmv.ca.gov/portal/vehicle-registration/new-registration/register-an-off-highway-vehicle-ohv/

LEAVE NO TRACE!



For non-emergency dispatch or to report a problem:
(760) 873-2405
Emergencies:
DIAL 911

Town/Services	Snowmobile Routes Groomed by USFS	Closed to Snowmobiles
Gates	Major Roads	Yosemite National Park
Peaks	Unplowed Road	Wilderness Non-Motorized
Restroom	Lakes	
Ranger Station	Streams	

VISITOR INFORMATION

- MAMMOTH LAKES WELCOME CENTER & RANGER STATION**
(760) 924-5500
Located on HWY 203 at the entrance to the Town of Mammoth Lakes.
- MONO BASIN SCENIC AREA VISITOR CENTER**
(760) 647-3044
Located off of HWY 395 in Lee Vining. No services in winter.
- WHITE MOUNTAIN RANGER STATION**
(760) 873-2500
Located on HWY 395 in Bishop.
- TOWN OF MAMMOTH LAKES PARKS & RECREATION DEPARTMENT**
(760) 934-8989 ext 222
www.mammothrecreation.com
- MAMMOTH LAKES TOURISM**
(760) 934-2712 or 1-888-GO-MAMMOTH
www.visitmammoth.com
- TRAIL CONDITIONS (MAMMOTH LAKES TRAIL SYSTEM)**
www.mammothtrails.org/trail-conditions/

ADDITIONAL RESOURCES
www.mammothtrails.org/local-recreation/
www.sierraforever.com



**BE FRIENDLY! BE SAFE!
HAVE FUN! SHARE THE TRAIL!**

MAMMOTH LAKES AND JUNE LAKE AREA

INYO National Forest



WINTER SAFETY KNOW BEFORE YOU GO!

BEFORE YOU GO:

- Stay alert to changing weather and snow conditions
- Have a plan and share it with others
- Know the risks and be prepared
- Practice rescue skills and be self-reliant
- Travel with a partner and work as a team
- Have a way to communicate in an emergency
- Safety is your responsibility
- Public restrooms subject to closure
- Leave No Trace

WHEN IN THE BACKCOUNTRY:

- Hazards are not mitigated
- Stay off frozen lakes and cross snow-covered creeks with caution
- Nothing can replace professional instruction and experience
- Know your route and be able to identify avalanche terrain

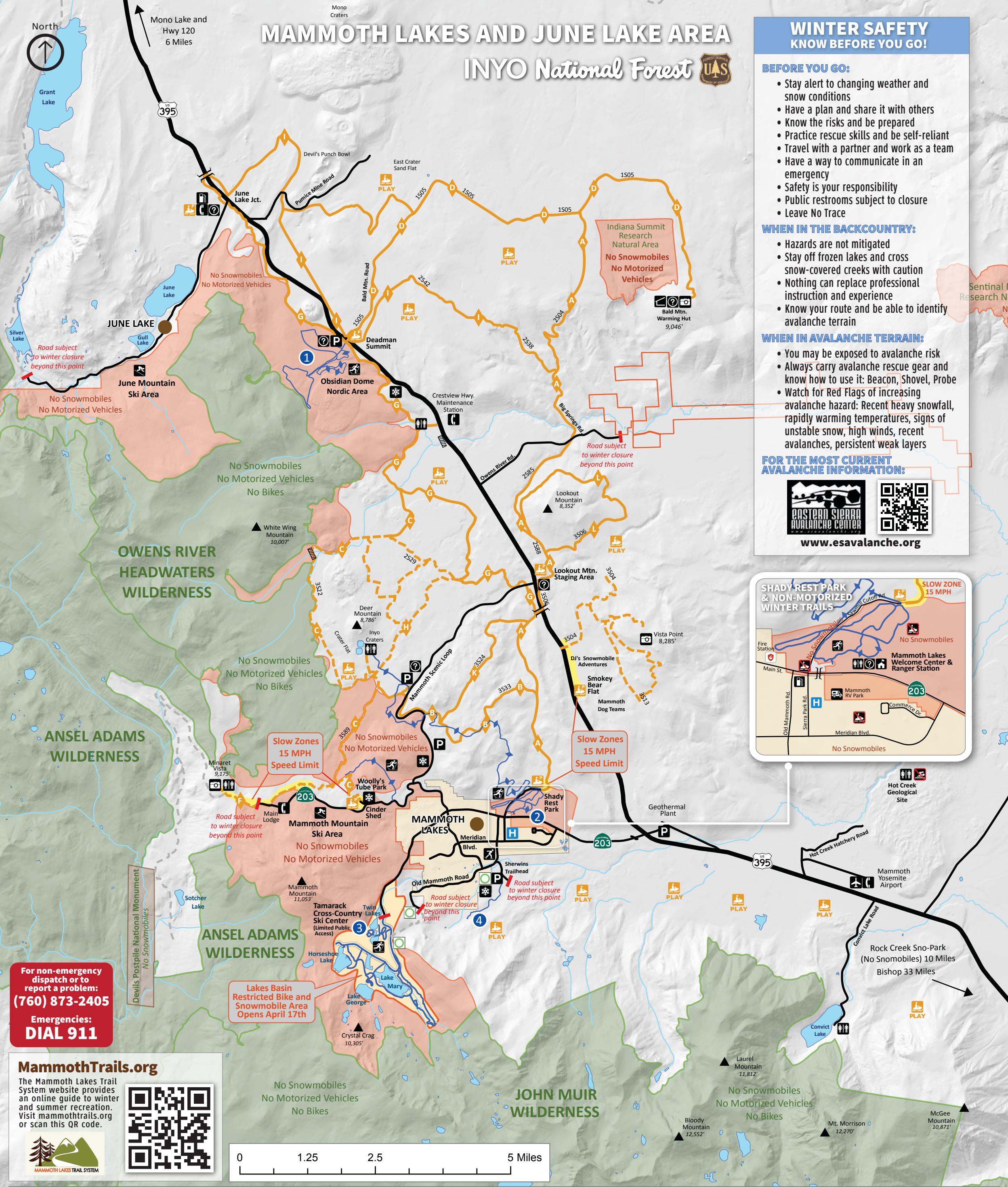
WHEN IN AVALANCHE TERRAIN:

- You may be exposed to avalanche risk
- Always carry avalanche rescue gear and know how to use it: Beacon, Shovel, Probe
- Watch for Red Flags of increasing avalanche hazard: Recent heavy snowfall, rapidly warming temperatures, signs of unstable snow, high winds, recent avalanches, persistent weak layers

FOR THE MOST CURRENT AVALANCHE INFORMATION:

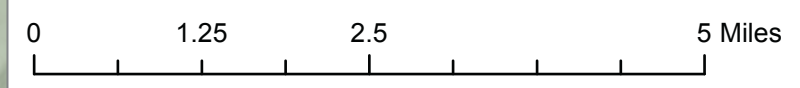


www.esavalanche.org



For non-emergency dispatch or to report a problem: **(760) 873-2405**
Emergencies: **DIAL 911**

MammothTrails.org
The Mammoth Lakes Trail System website provides an online guide to winter and summer recreation. Visit mammothtrails.org or scan this QR code.



<ul style="list-style-type: none"> Nordic Skiing Alpine Skiing Ice Skating Snowplay Area Hut Parking OSV Recommended Staging Area OSV Play Area Avalanche Beacon Checkpoint 	<ul style="list-style-type: none"> Vista Gas Phone Kiosk Restroom Ranger Station RV Park Airport Hospital 	<ul style="list-style-type: none"> Snowmobile Routes Groomed by USFS Snowmobile Routes Groomed under permit Non-Motorized Groomed Trails <i>No E-Bikes</i> Non-Motorized Ungroomed Trails Lakes Basin Winter Public Access Corridor Unplowed Road Major Roads 	<ul style="list-style-type: none"> Tunnel Gates Peaks Bridge Town Lakes Streams 	<ul style="list-style-type: none"> Slow Zones <i>Speed Limit 15 MPH</i> Closed to Snowmobiles Lakes Basin Restricted Area Wilderness <i>Non-Motorized</i> 1 Obsidian Dome Nordic Area 2 Shady Rest Winter Trails 3 Tamarack Cross-Country Ski Center 4 Sherwins Winter Trails 	<p>TRAIL COURTESY</p> <p>YIELD TO</p>	<p>Kindly respect our environment</p> <p>LEAVE NO TRACE!</p> <p>BE BEAR AWARE!</p>
--	--	--	--	---	---	---